



**American Red Cross**



**depiction**  
*... More than Mapping*

# depiction<sup>®</sup>

Map. Simulate. Collaborate. Decide.



# Tools for Emergency Preparedness and Response



# Tools for Emergency Preparedness and Response

Preparedness

Response



- Asset Management
- Tabletop Exercises

- Situational Awareness
- Disaster Assessment







# September is National Preparedness Month

Take action now to make sure your family, neighborhood and community are ready for emergencies and disasters of all types:

- ➔ Put together an emergency supply kit
- ➔ Make a family emergency plan
- ➔ Be prepared to help your neighbor
- ➔ Work as a team to keep everyone safe

To learn more about how you can prepare for emergencies visit [ready.gov](http://ready.gov) or call **I-800-BE-READY**, TTY **I-800-462-7585**

## A Time to Map!



NATIONAL PREPAREDNESS MONTH

September 2011 | [ready.gov](http://ready.gov)



**A Time to Remember.**  
**A Time to Prepare.**





Kibera Slum

Mashimoni Good Samaritan School

Bishop Magua Centre

Church of God

Kimalale Primary School

Kenya Medical Research Institute

Armed Forces Memorial Hospital

Kenya Medical Research Institute

Centres for Disease Control and Prevention

Nairobi Dam

Langata Shopping Centre

Cockpit

Rafikiz Lounge

KCB ATM

Safarilink Aviation

Digi-Tel Communication Systems

Nagalakshmi Solutions Limited

Hypercars

Uhuru Gardens

Langata Studio

Malezi School

Phase 2 NHC

Children's Playground

NHC OFFICES

Storage House

Tosha Bio Center

Mashimoni

Kisumu Ndogo

Kambi Muru

Ndugu Mdogo Rescue Centre

Playground

Gateway

Grocery Shop

Montezur & Monalis

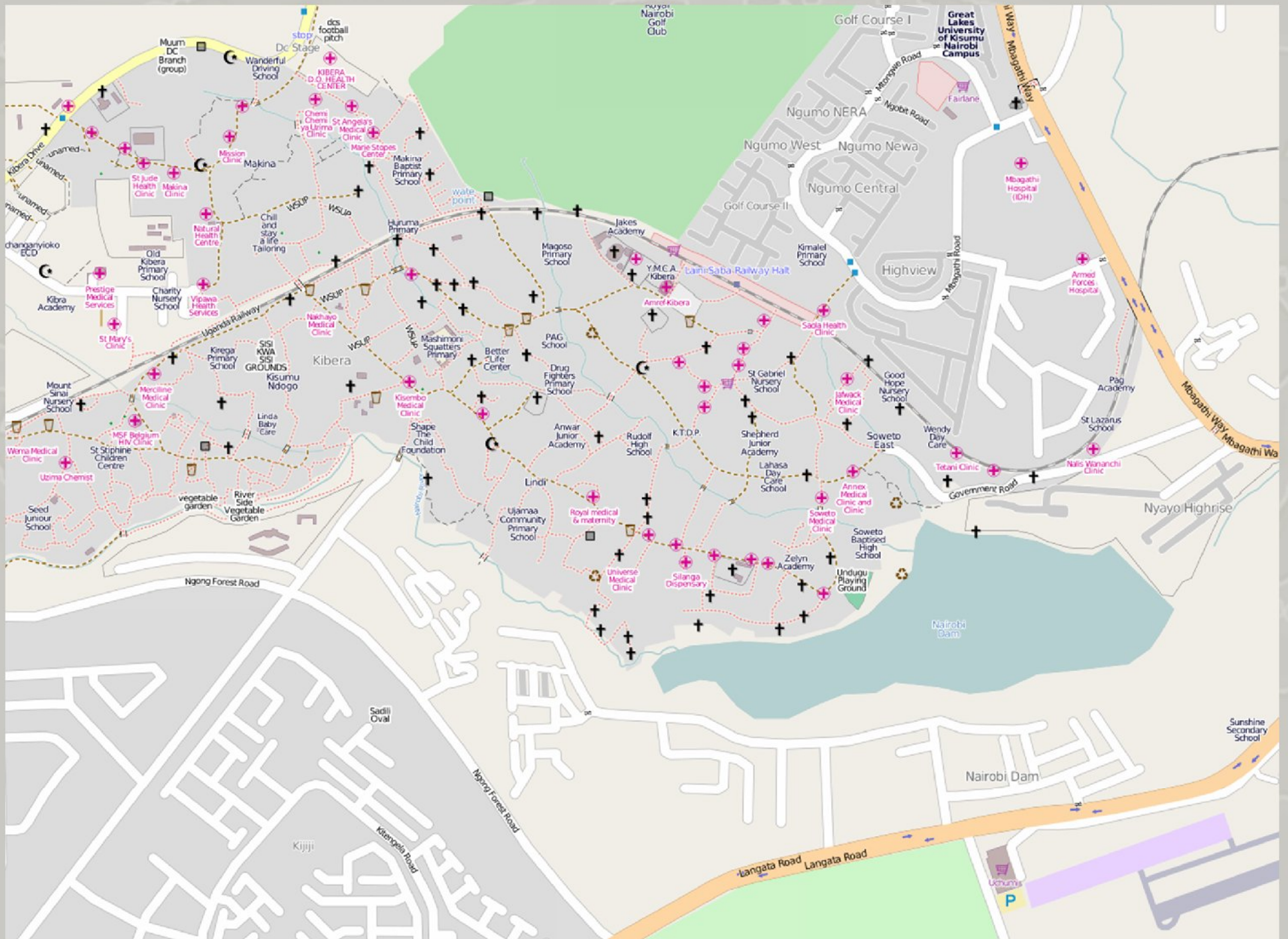
Redeemed Christian Church of God

Umash Funeral Services

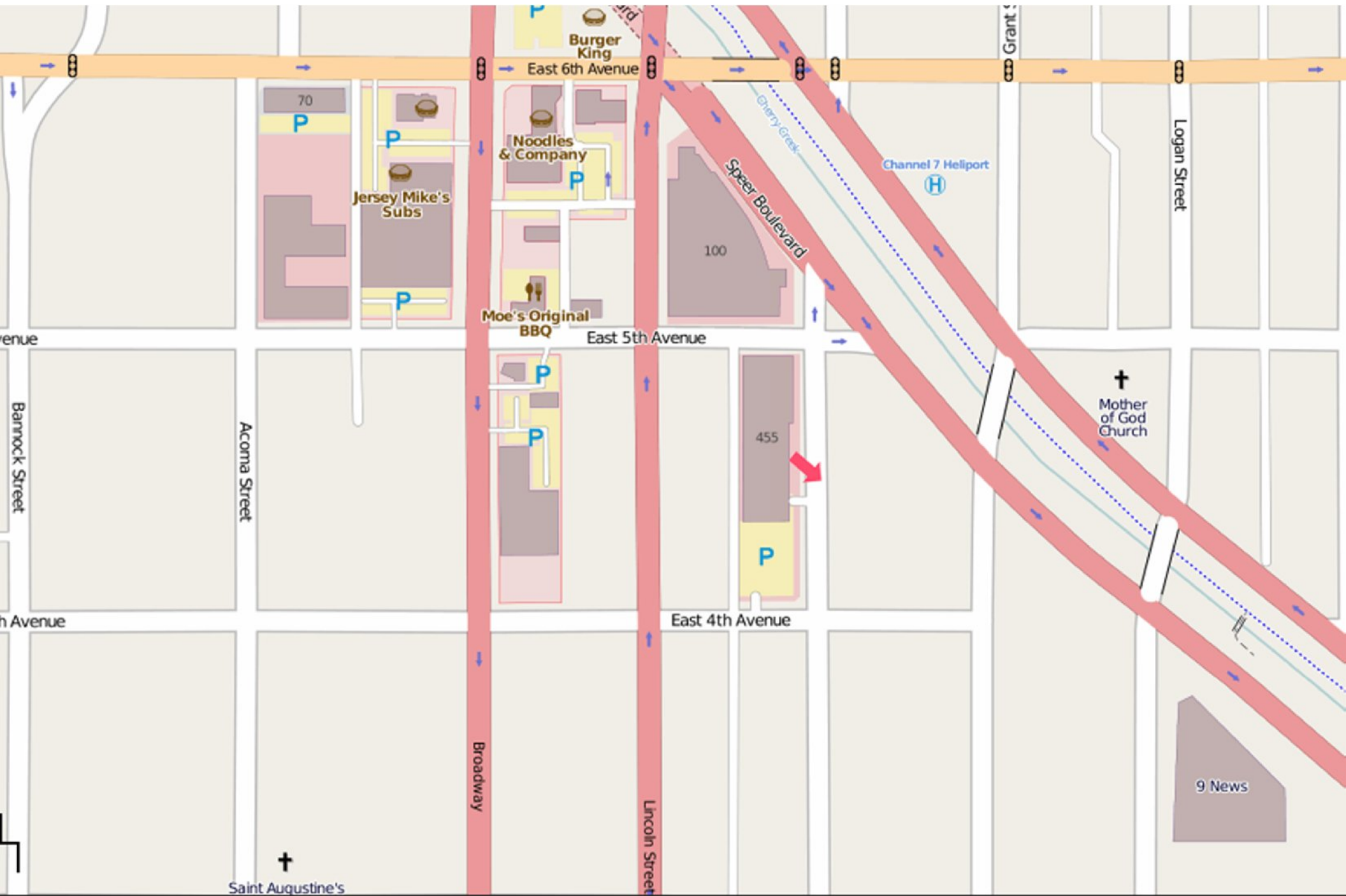
Ad Pc

African Resee Fou





12:20pm Tuesday 9/6/11





# Mapping...You are the expert!

View Edit History Export GPS Traces User Diaries

Welcome, HurricaneCoast | home | inbox (1) | logou

Background Map Style GPS Data Undo Redo Help Options Save

Add new points by dragging them onto the map

**Shopping:**

- Shopping cart, Shopping basket, Pretzel, Wine, Bicycle, Book, Megaphone
- Car, Car with person, T-shirt, Fish, Fish and fork, Flower
- Teapot, Gift, Apple, Scissors, Bed, Ring, Smartphone
- Washing machine, Bicycle, Music note, Medical cross, Dog, Dining table

**Food and Drink:**

- Coffee cup, Beer, Glass, Wine glass, Fork and knife, Mug, Plate

**Amenity:**

- Fire, Wrench, Book, Medical cross, Person, Dollar sign, Dollar sign
- Recycling, Green bin, Green bin, House, Envelope, Envelope
- Person, Person, Person, Person, Person, Person
- Person, Person, Person, Person, Person, Person

**Tourism:**

- Church, Cup, Scissors, Grid, Book, Church, A-frame
- Person, Person, Person, Person, Person, Person
- Person, Person, Person, Person, Person, Person

**Accommodation:**

- Bed, Bed, Bed, Bed, Bed, Bed
- Person, Person, Person, Person, Person, Person

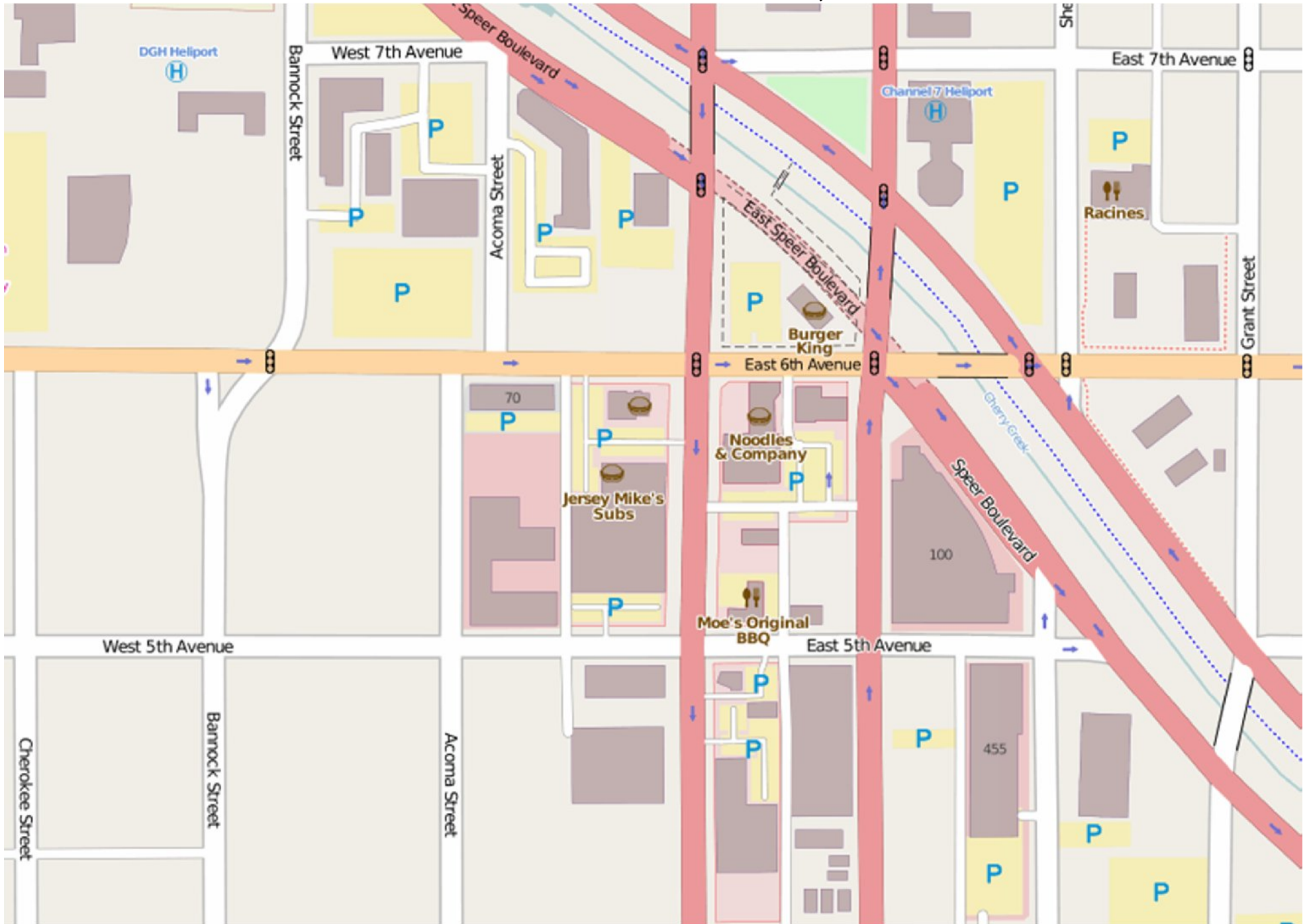
bing

Background © 2011 Microsoft Corporation, image courtesy of USGS



After 12:40pm 9/6/11

Locals know what's: current, correct



# OpenStreetMap

- Compare OSM to Google: <http://tools.geofabrik.de/mc/>
- Contributions: <http://yosmhm.neis-one.org>
- Sign Up: <http://openstreetmap.org>







# Denver Zoo



flickr®

Before



Beijing

After

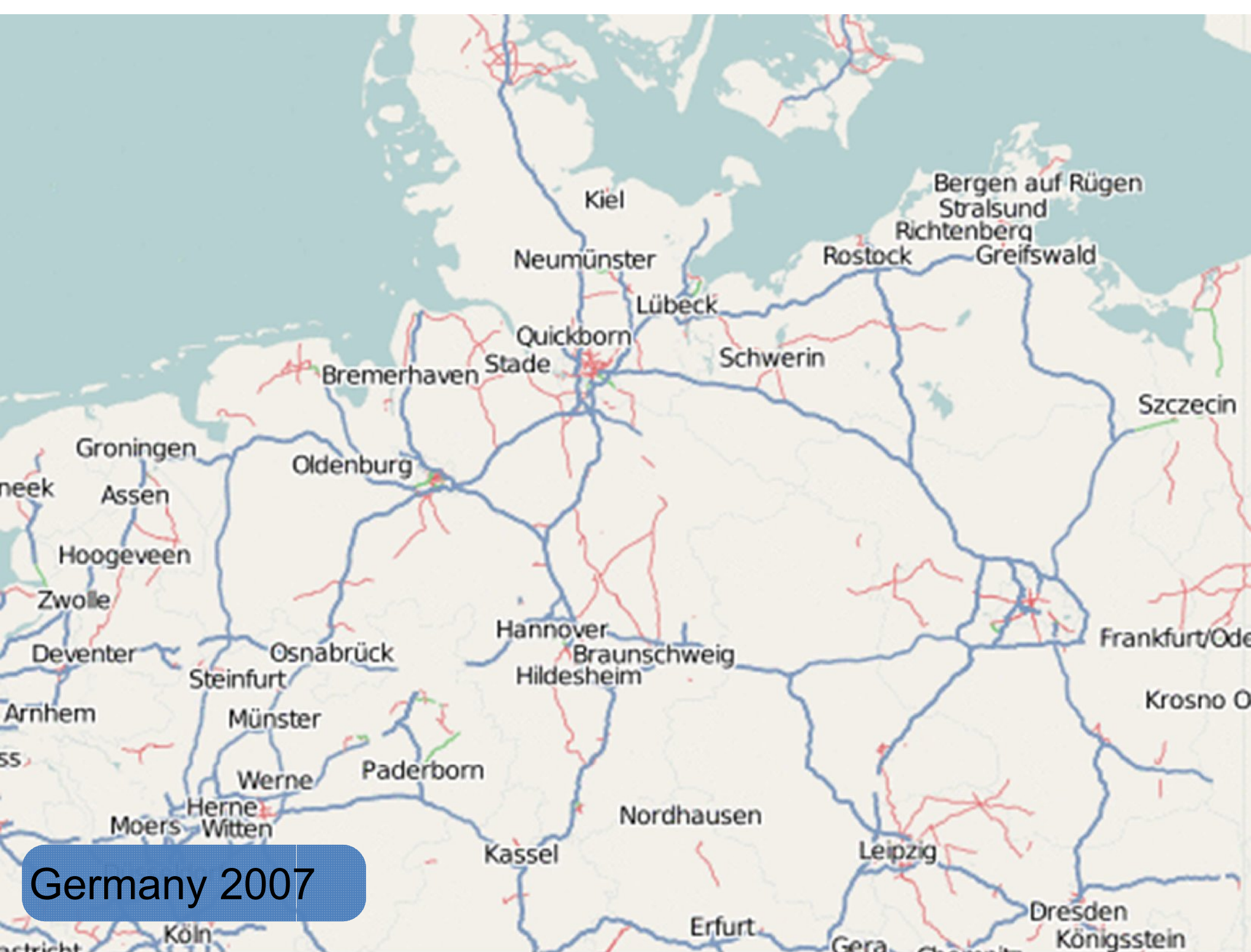


北京



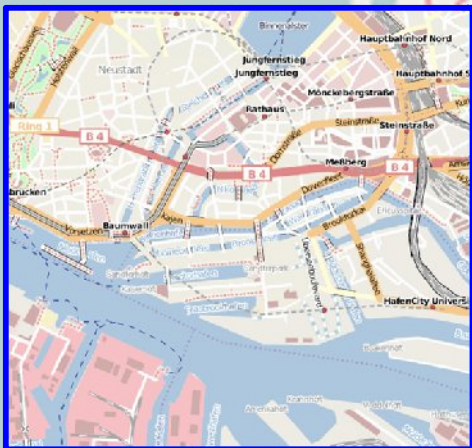
Germany 2006





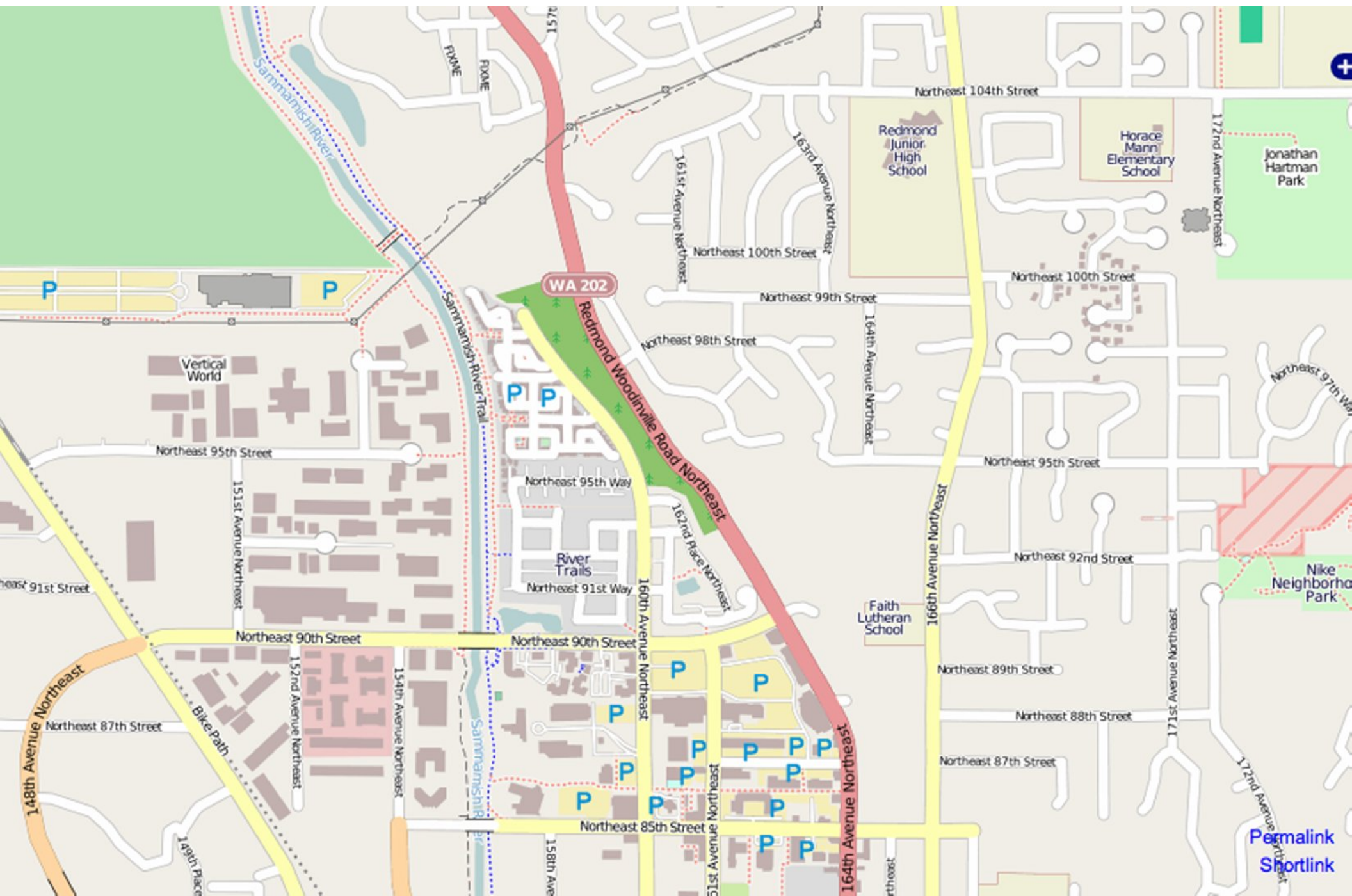
Germany 2007





Germany 2008





[Permalink](#)  
[Shortlink](#)

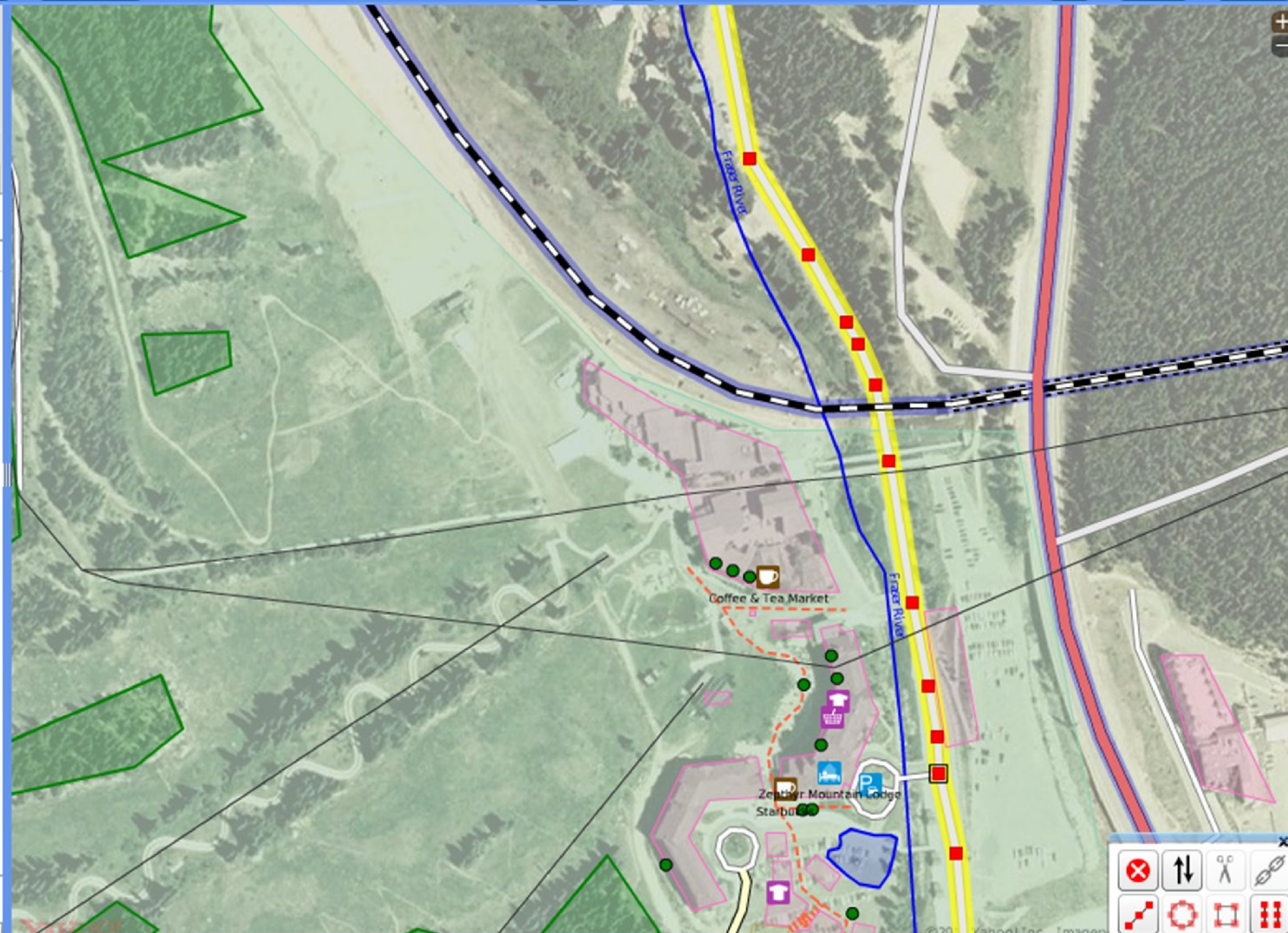


Winter Park Drive

potential road

Naming Cycle

k Drive



Advanced

Map editing tools: Undo, Redo, Copy, Paste, Erase, Add Node, Add Way, Add Relation, Add Area, Add Polygon, Add Line, Add Point, Add Area, Add Polygon, Add Line, Add Point



# Mapping Party!





Denver, CO

Founded Jul 8, 2010

[Read more about us...](#)

OSM Mappers 82

Group reviews 8

Upcoming Meetups 4

Past Meetups 23

Our calendar

Follow us

[Add your group's links](#)

Organizers:  
[deb](#), [Hurricane Coast](#), [Jeremy Tanner](#)



[View The Leadership Team](#)

Members can suggest Meetups



This is the new look of your Meetup's home page!

[Learn more about what's new](#)

[Switch back to the old look](#)  
[Give feedback to Meetup HQ](#)

## Committed to Mapping Denver, Front Range and Points West!

[+ SCHEDULE A NEW MEETUP](#)

[UPCOMING 4](#)

[SUGGESTED 2](#)

[PAST](#)

[CALENDAR](#)

### Mapping Nederland - Sep 18th @ 11am! (date change)

Wild Mountain Smokehouse  
70 East 1st Street, Nederland, CO ([map](#))



We'll meet at 11am at the Wild Mountain Smokehouse parking lot and divvy up walking papers and where we'll all be going to map. Hopefully we'll have a few GPS units to...

[LEARN MORE](#)

Hosted by: [deb](#) (Organizer)

Sun Sep 18  
11:00 AM

[RSVP](#)

2 attending

0 comments

## What's new



[SEE ALL PHOTOS](#)

[NEW COMMENT](#)

[David Jenne](#)





37 Countries  
Meet other volunteer mappers!

Three days of talks,  
seminars, workshops



# DEPICTION IN ACTION



# Contact Information

- Russell Deffner –  
[Russell@RussellDeffnerConsulting.com](mailto:Russell@RussellDeffnerConsulting.com)
  - Spatial Information Management Specialist
  - Depiction Preferred Consultant
- For more information, visit:
  - <http://russelldeffnerconsulting.com>
- For information or to purchase depiction, visit:
  - [www.depiction.com](http://www.depiction.com)