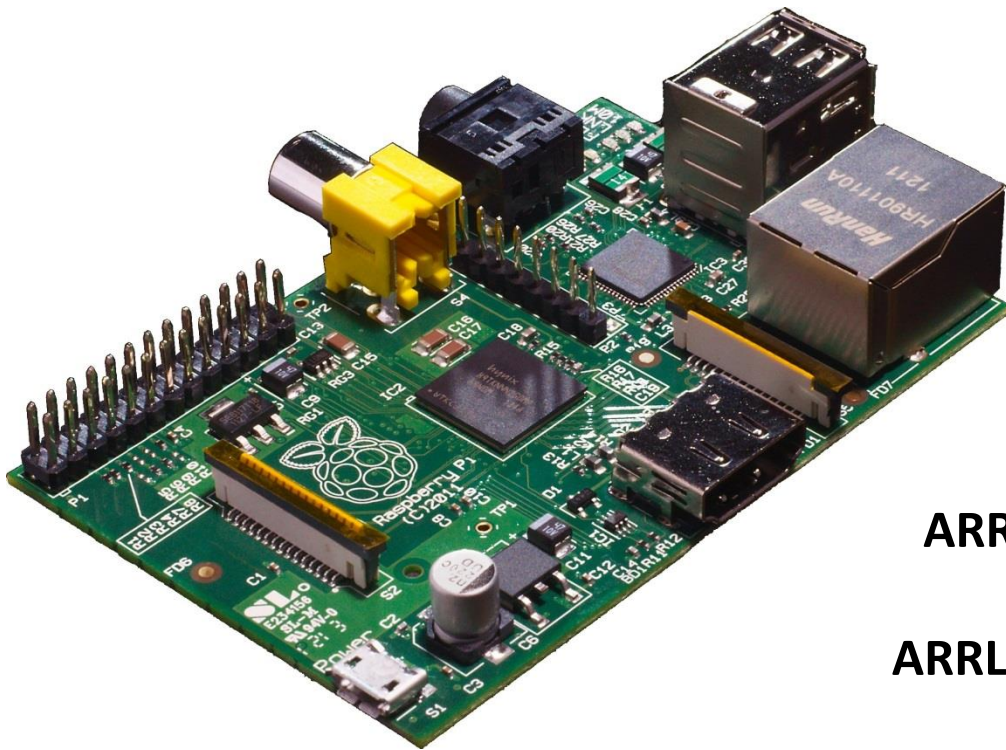


Raspberry Pi

A Low Cost Platform For Amateur Radio Projects



Ed James, KA8JMW
ARRL NM Assistant Section Manager
Brian Mileschosky, N5ZGT
ARRL Rocky Mountain Division Director

Presentation to
2013 TechFest
November 2nd, 2013

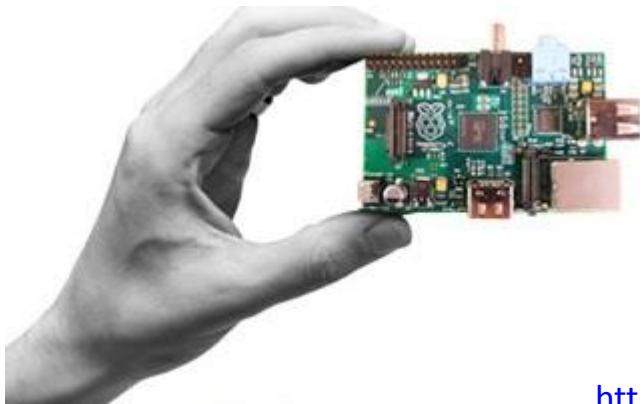


Raspberry Pi (Wiki)

*“The **Raspberry Pi** is a credit-card-sized single-board computer developed in the UK by the Raspberry Pi Foundation with the intention of promoting the teaching of basic computer science in schools.”*

“The Raspberry Pi has a Broadcom BCM2835 system on a chip (SoC), which includes an ARM1176JZF-S 700 MHz processor”

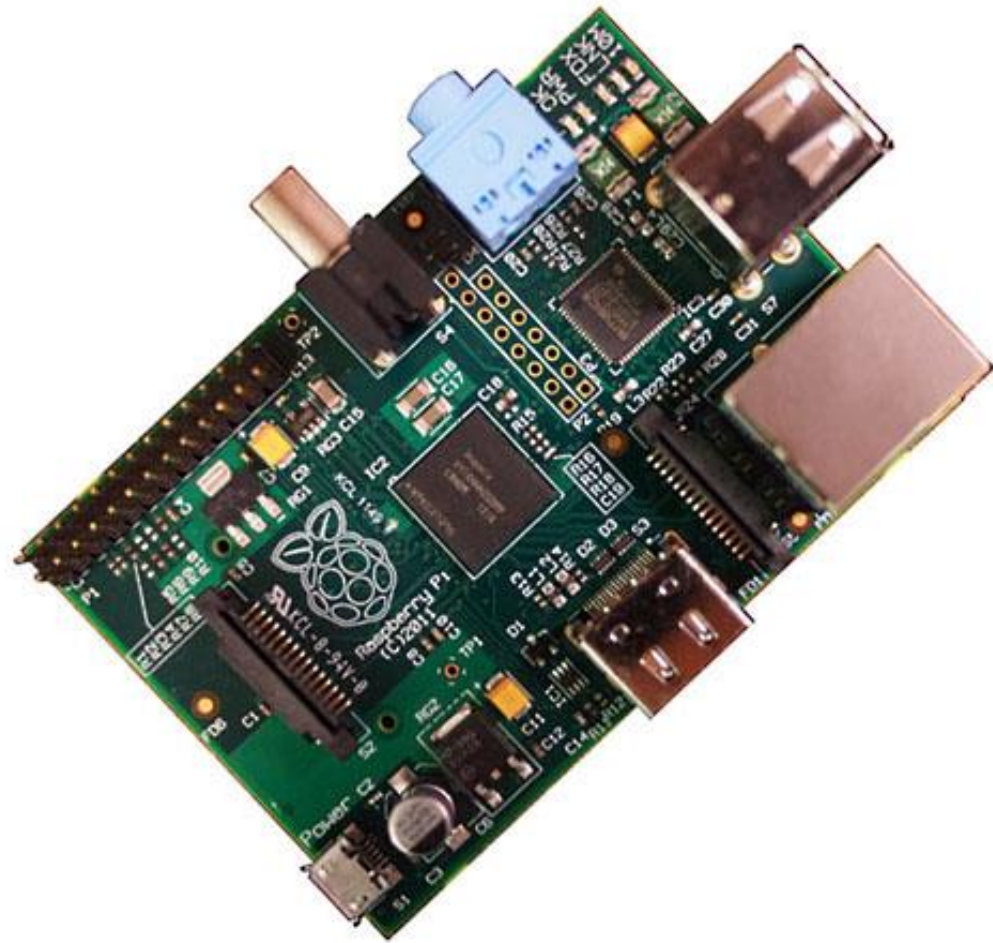
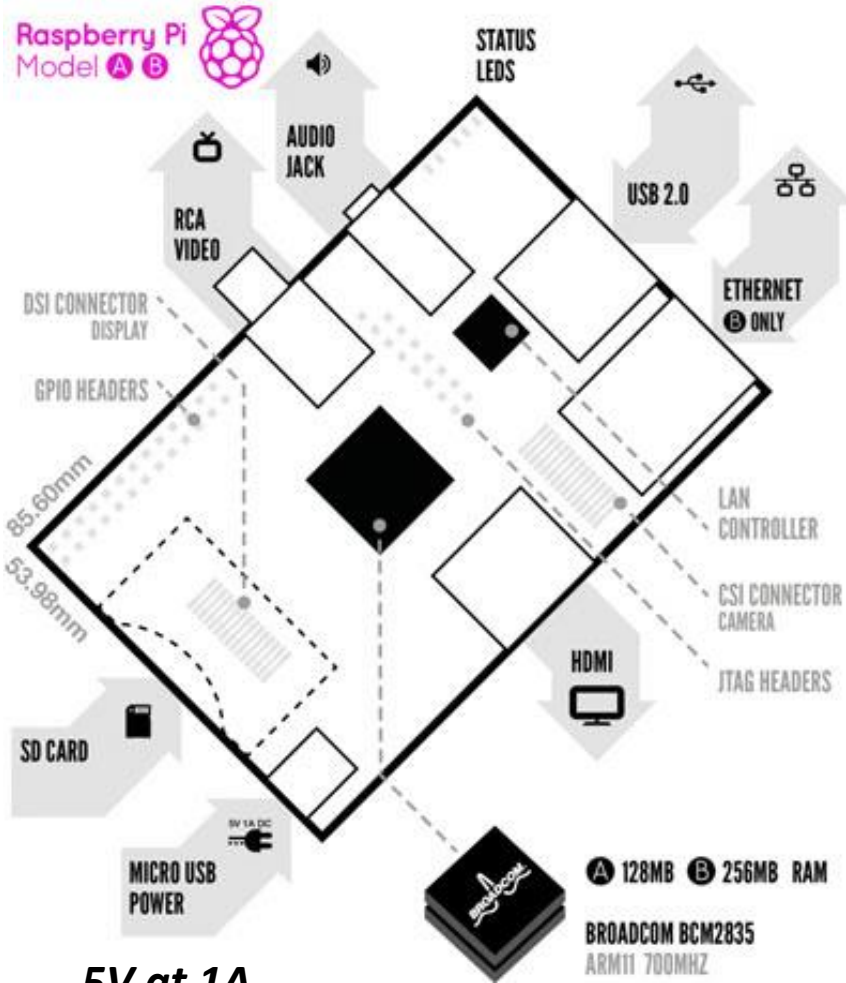
Two versions available:



	RAM	USB	Ethernet	Cost
Model A	256MB	1	NO	\$25
Model B	512MB	2	YES	\$35

http://en.wikipedia.org/wiki/Raspberry_Pi

Raspberry Pi layout (Model B)



5V at 1A

Supported Operating Systems

Linux (*The Preferred Environment*)

Raspbian, Debian GNU/Linux, Fedora, Arch Linux ARM

RISC OS

Unix:

FreeBSD, NetBSD

Plan 9

Android 2.3 (Gingerbread), 4.0 (Ice Cream Sandwich)

Google Chrome OS

Firefox OS

DOS, 80486 200MHz, SVGA, SoundBlaster, COM1:

AROS, Amiga Research Operating System

...

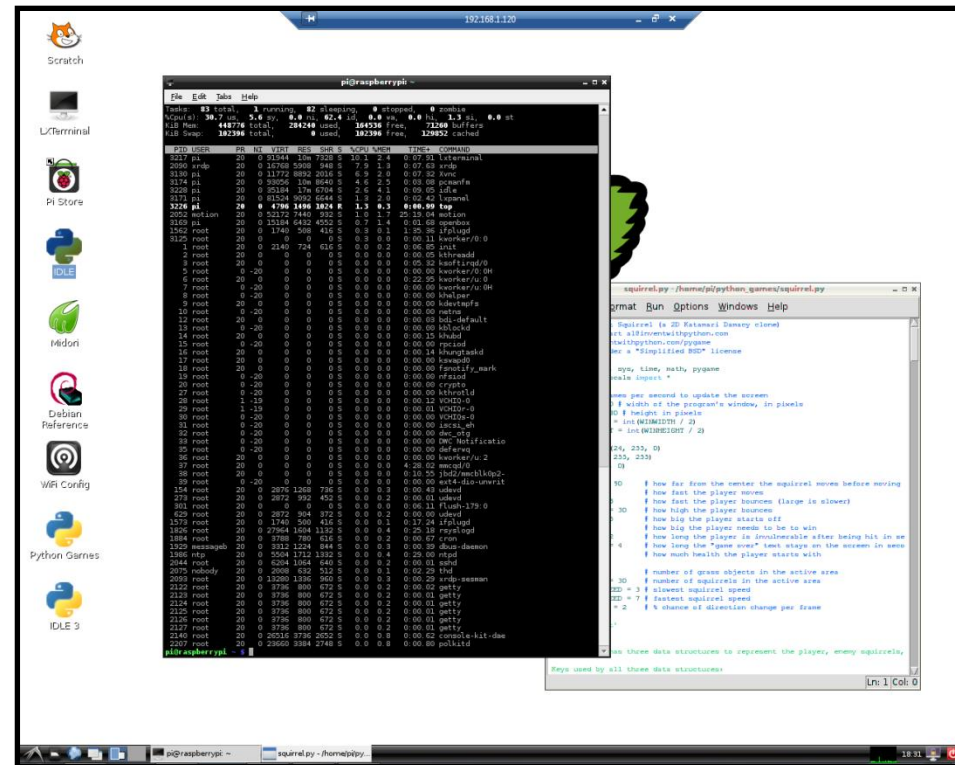
And the list just keeps on growing.

http://en.wikipedia.org/wiki/Raspberry_Pi

Connecting with your RPi

The User Interface

- X-windows GUI
 - Keyboard, mouse, HDMI
 - Xrdp (headless)



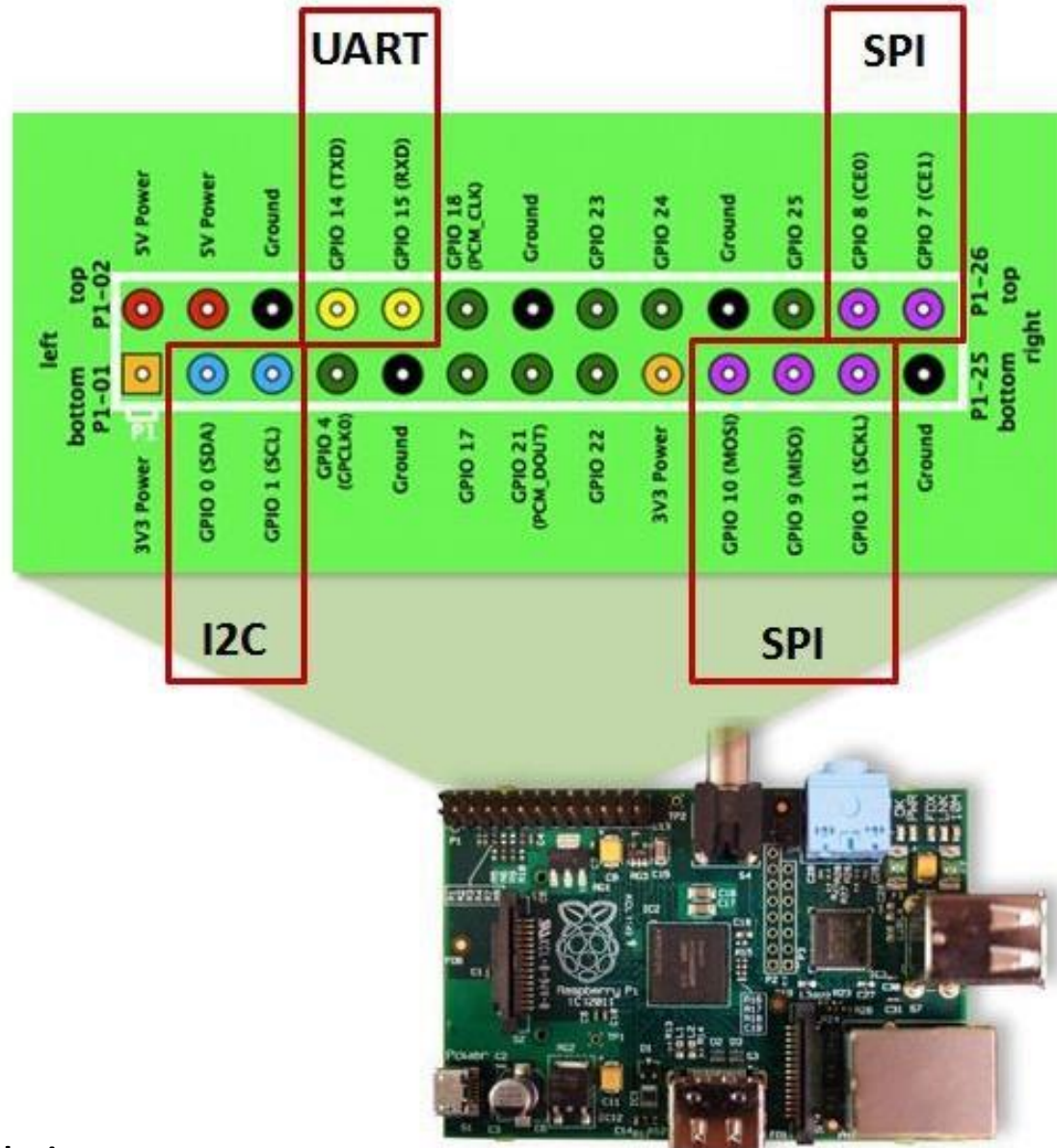
- Command line
 - Serial Terminal
 - SSH user interface (headless)

Let's Dig in a little deeper

Raspberry Pi (RPI) General Purpose Input/Output (I/O)

- The RPi board has a 26-pin expansion header with 17 GPIO pins as well as +3.3 V, +5 V and GND supply lines.
- The default configuration provides 15 GPIO pins and a UART.
- The operating system also supports predefined alternate functions for some of the pins
 - I²C (Inter-Integrated Circuit) is a two wire communication bus developed by Philips, for chip to chip communication. Commonly used for connecting sensors and port expanders.
 - Serial Peripheral Interface (SPI) bus is a synchronous serial data bus designed by Motorola. Commonly used in high speed applications such as digital audio, digital signal processing and telecommunications.
 - UART, TXD and RXD
 - A Pulse Width Modulator (PWM)
- Operating system makes the hardware available to a variety of high level program languages including Python, C, Java, BASIC along with Perl and Bash shell scripts.
- Additional I/O pins are available via bit-banging and hacking

RPi GPIO Pinout



1. The RPi is a 3.3V device
2. The GPIO pins are unbuffered and unprotected, so if you short something out, you could fry your whole RPi, be careful!

What Can I Do With My RPi?



**32 RPi low-cost
“Supercomputer” Cluster**

An Eclectic Mix of RPi Projects Projects



WiFi
Internet Radio Player



XBMC Media Player remote control



Cat Feeder



Event Countdown Clock



High Altitude Balloon Controller



Soil Moisture Monitor



Lighting Controller



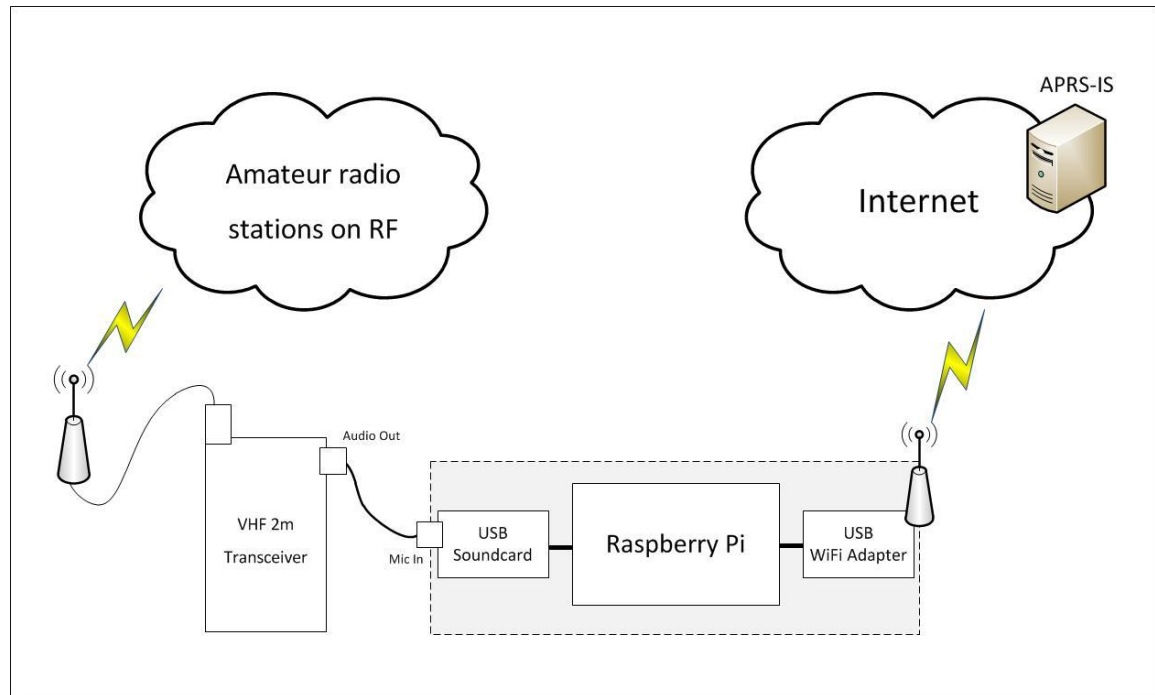
Home Alarm System

Now, The Really Fun Stuff

Amateur Radio and the RPi

piGate – an APRS iGate implementation using the Raspberry-Pi

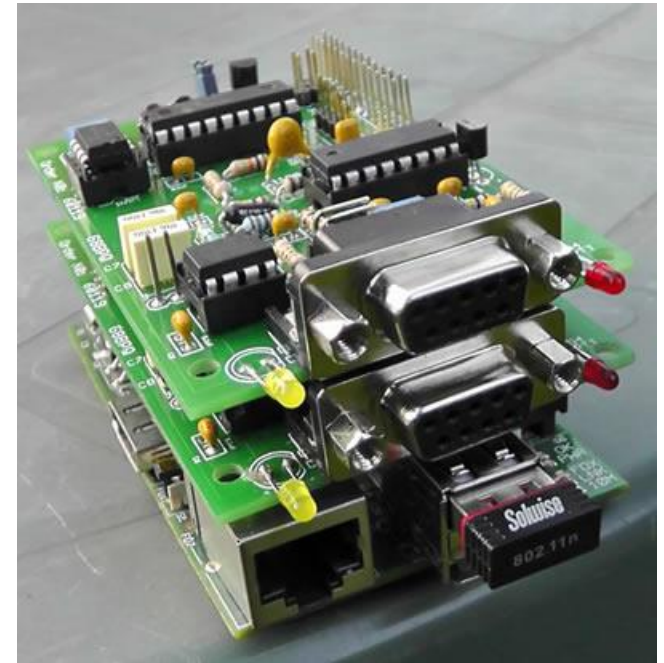
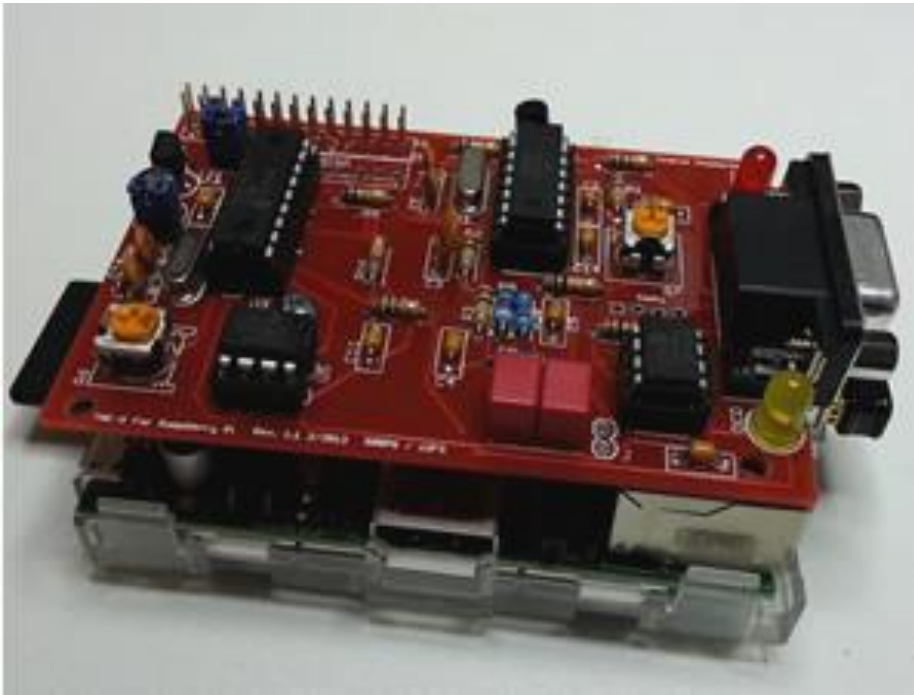
Software running on the Raspberry-Pi reads the audio signal coming into the sound-card, demodulates the signal, decodes the packet and then sends it to an APRS-IS server over the WiFi link



<http://www.ultratechie.com/2012/10/pigate/>

TNC-Pi RPi

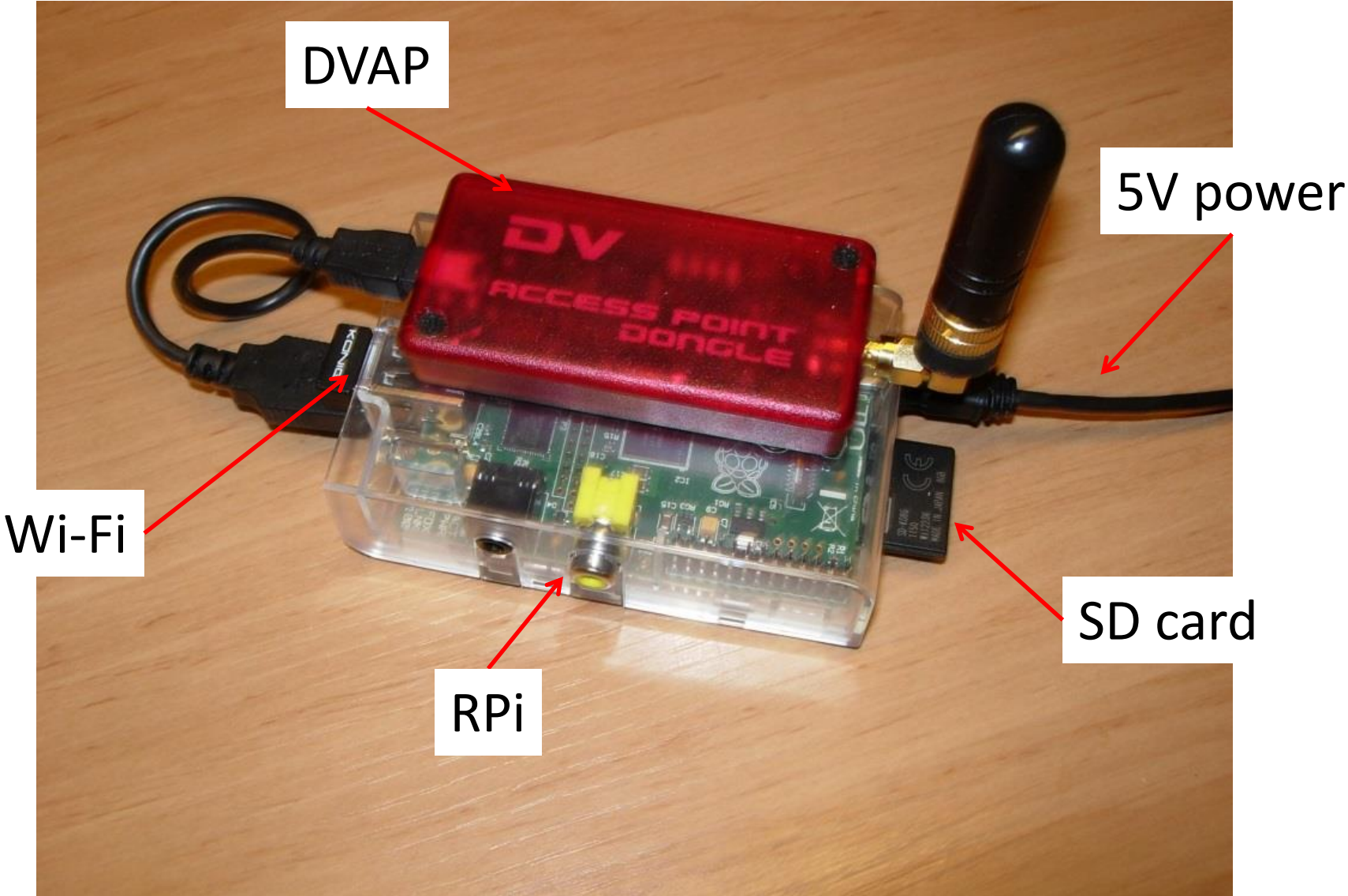
TNC-Pi is a special version of TNC-X designed to interface directly with the Raspberry Pi computer. It can connect to the Pi either via the Pi's serial port, or via the I2C protocol. In the latter case, a single Pi can support multiple TNC-Pi's at the same time, since each TNC-Pi can be given a unique I2C address.



Run a pair of TNC-Pi's with a single RPi to create a dual frequency digipeater.

<http://tnc-x.com/>

D-Star DV Access Point Dongle & RPi



Creates a point of presence on the D-Star network

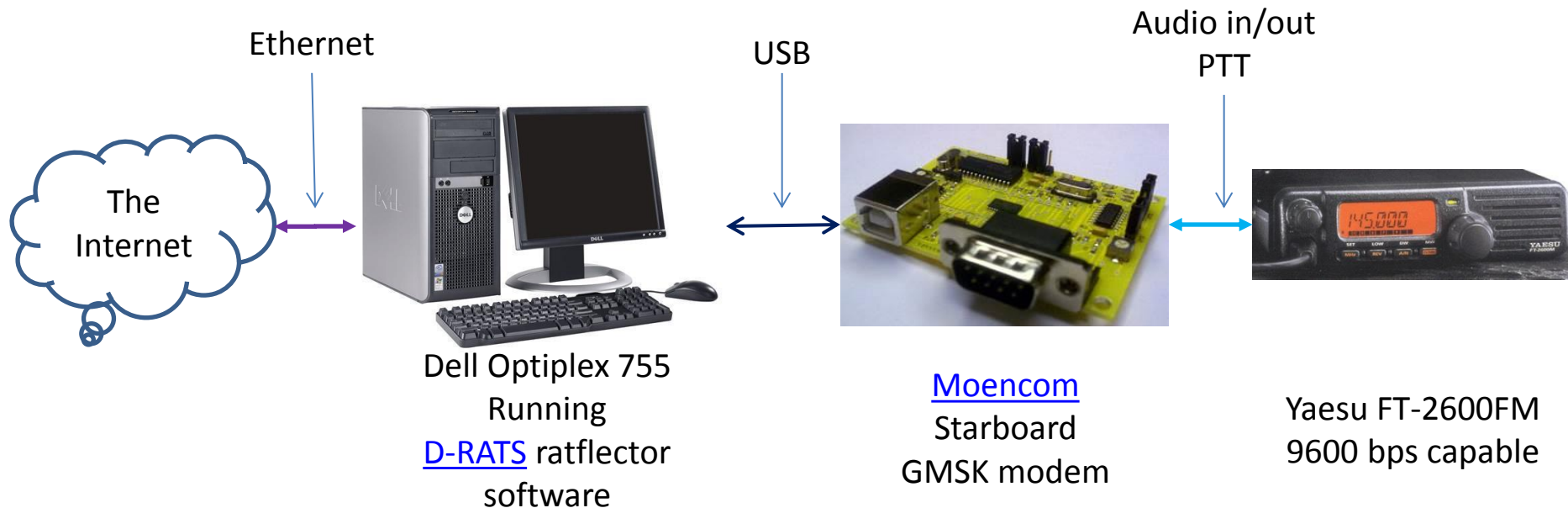
D-RATS



A Communications Tool For D-STAR

- [D-RATS](#) is a D-STAR communications tool that supports text chat, TCP/IP forwarding, file transfers, and can act as an e-mail gateway. There is also the ability to map user's positions using the D'PRS function of D-STAR. The application is written in Python/GTK and is cross-platform. It runs on Windows, Mac OS X, and Linux.
- A Ratflector is a hub that allows multiple D-RATS users using either Ethernet or RF connections to communicate with each other.

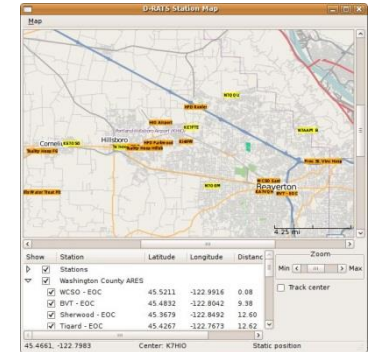
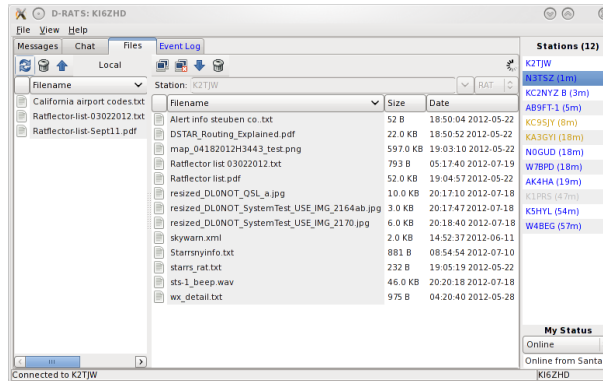
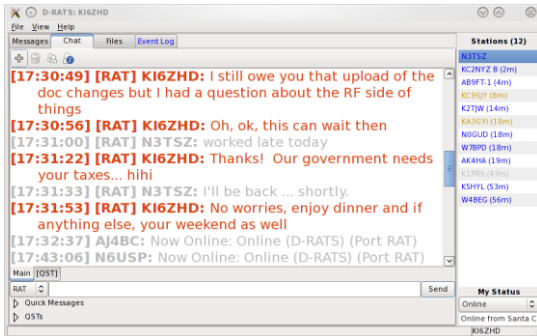
W5MPZ Ratflector



D-RATS



A Communications Tool For D-STAR

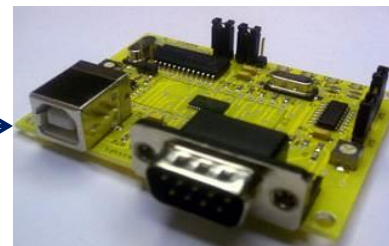
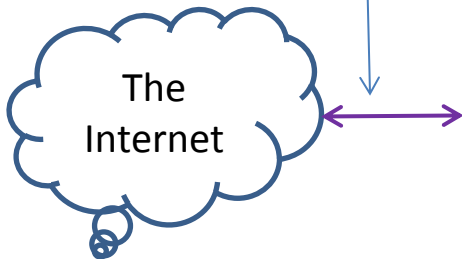


W5MPZ ratreflector (Rpi)

Ethernet

USB

Audio in/out
PTT



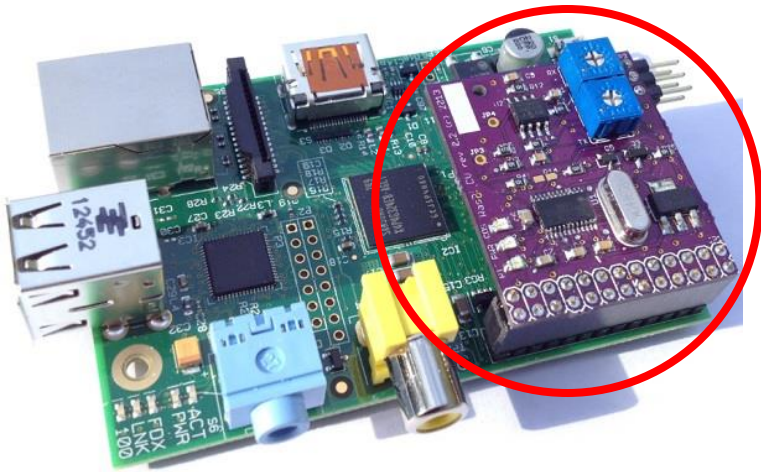
RPi
Running
D-RATS ratreflector
software

Moencom
Starboard
GMSK modem

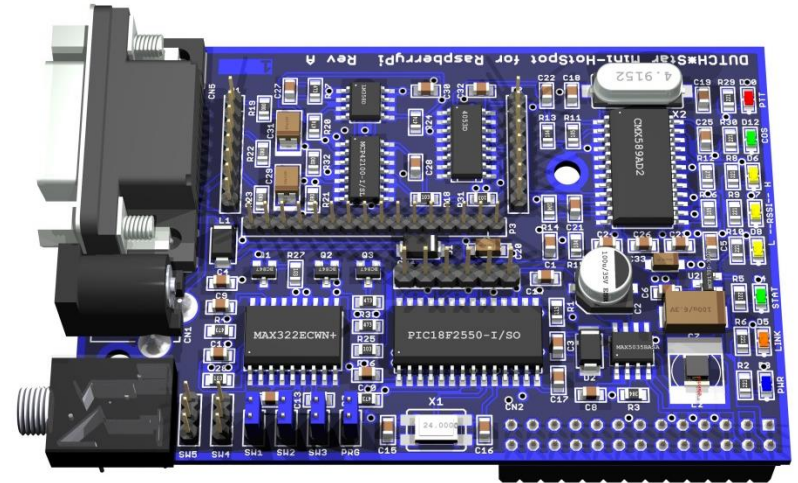
Yaesu FT-2600FM
9600 bps capable

GMSK modems for the RPi

- A RPi with either of these GMSK modems and a 9600bps capable narrowband FM radio to create a D-Star hotspot.
- With TWO radios and you get a D-Star repeater
 - Add an internet connection for a fully functioning D-Star gateway



http://ki6zum.com/dstar/dv_overview.htm

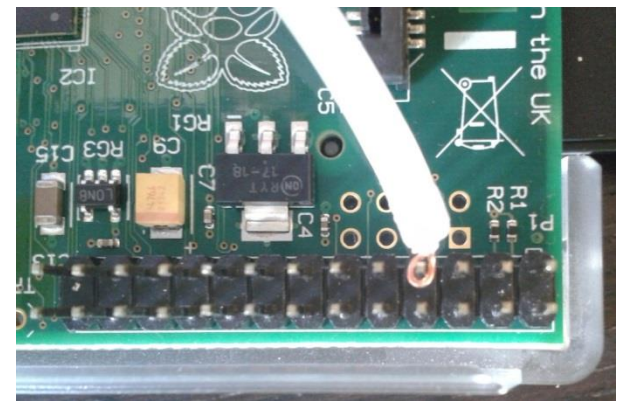


<http://www.dutch-star.eu/>

Turning the RPi into an FM Transmitter

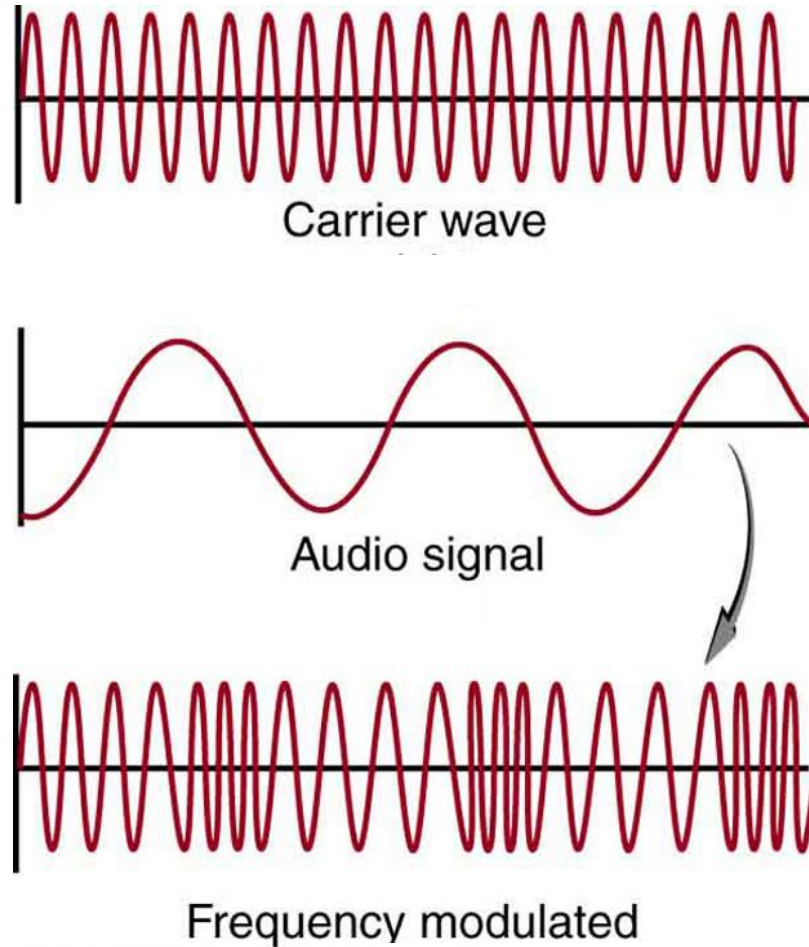
PiFM

- Using the existing hardware on the RPi that is intended to generate spread-spectrum clock signals to output FM RF.
- This means that all you need to do to turn the Raspberry-Pi into a FM Transmitter is to connect an antenna onto GPIO pin 4 and run the code.



http://www.icrobotics.co.uk/wiki/index.php/Turning_the_Raspberry_Pi_Into_an_FM_Transmitter

PiFM Demonstration

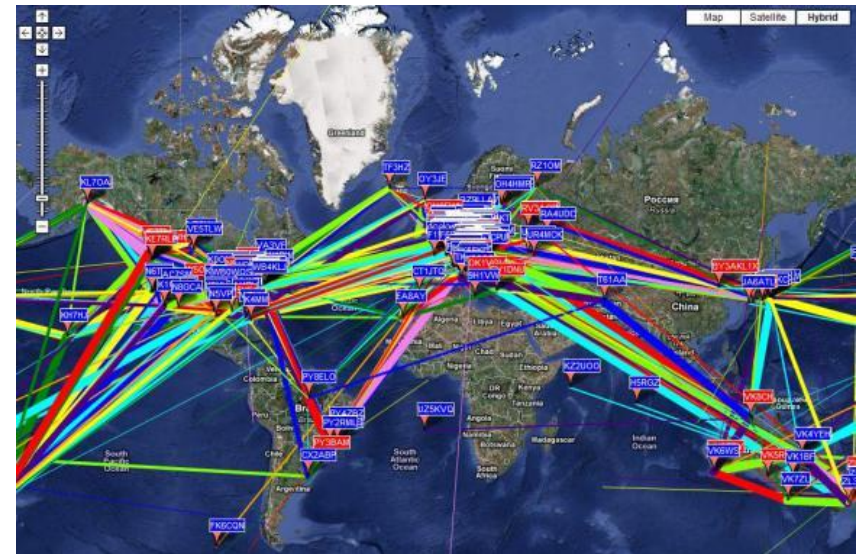


```
sudo ./pifm sound.wav 100.1
```


RPi LF/MF/HF/VHF WSPR Transmitter

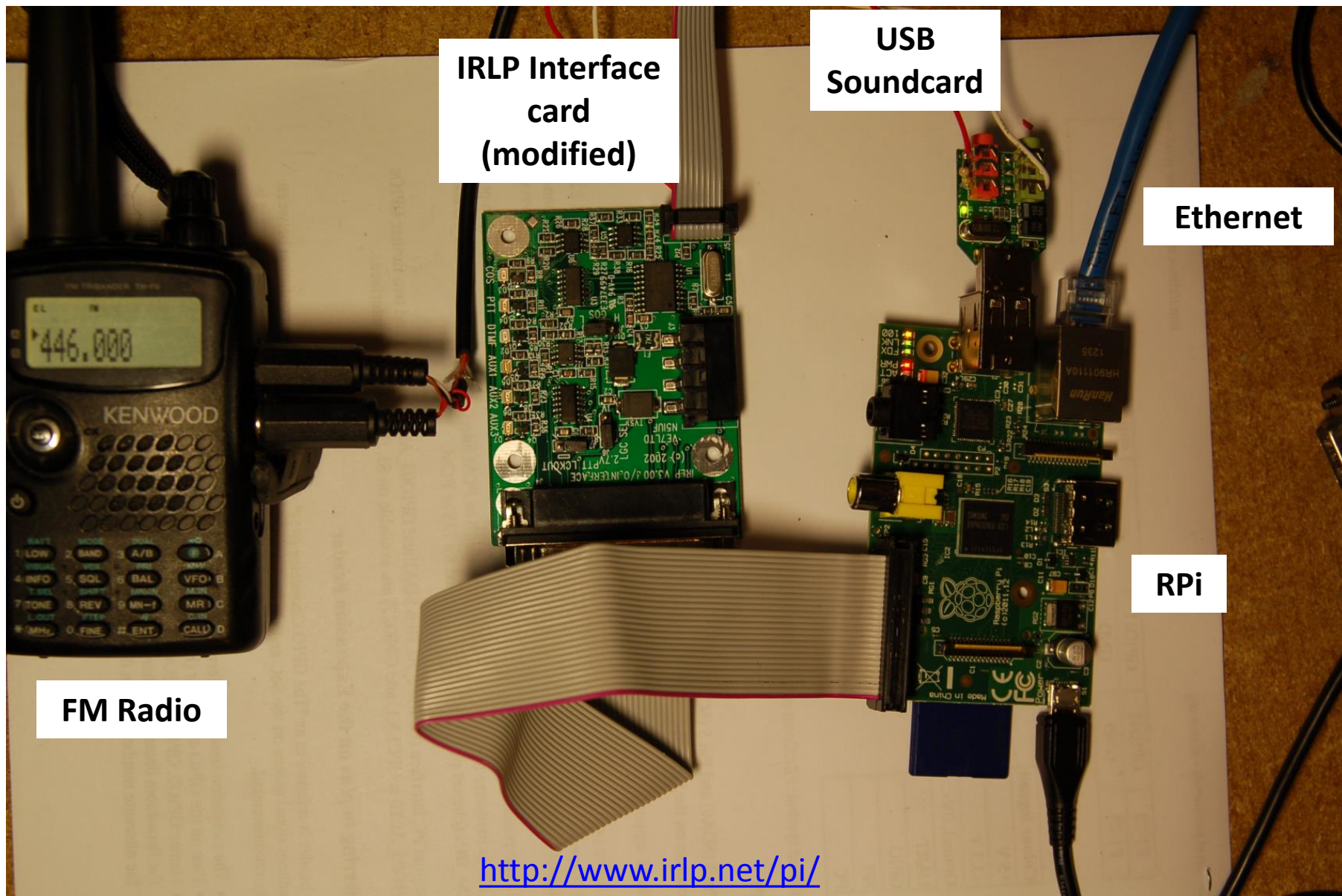
- Weak Signal Propagation Reporter (WSPR).
- Used for weak-signal radio communication between amateur radio operators.
- Designed for sending and receiving low-power transmissions to test propagation paths on the MF and HF bands.
- WSPR implements a protocol designed for probing potential propagation paths with low-power transmissions.
- Transmissions carry a station's callsign, Maidenhead grid locator, and transmitter power in dBm.
- Stations with internet access can automatically upload their reception reports to a central database called WSPRnet, which includes a mapping facility.

- **With a little code**
 - **PiFM with a wrapper**
- **A low pass filter**
- **Your RPi is good to go**
 - **0 to 250MHz**
 - **+10dBm (10mw)**



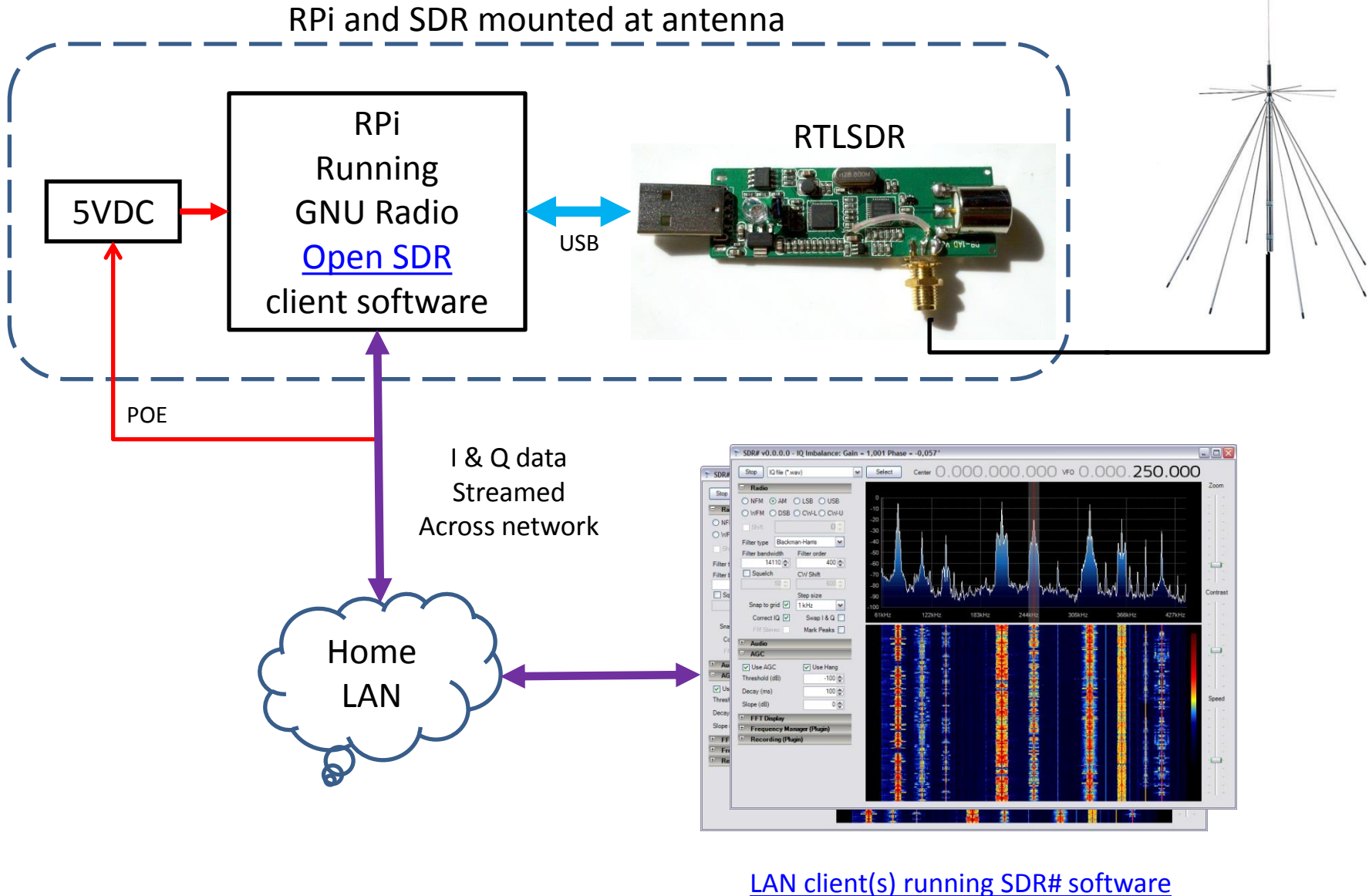
<https://github.com/threeme3/WsprryPi>

PiIRLP (IRLP on a RPi)



<http://www.irlp.net/pi/>

A Software Defined Radio Server

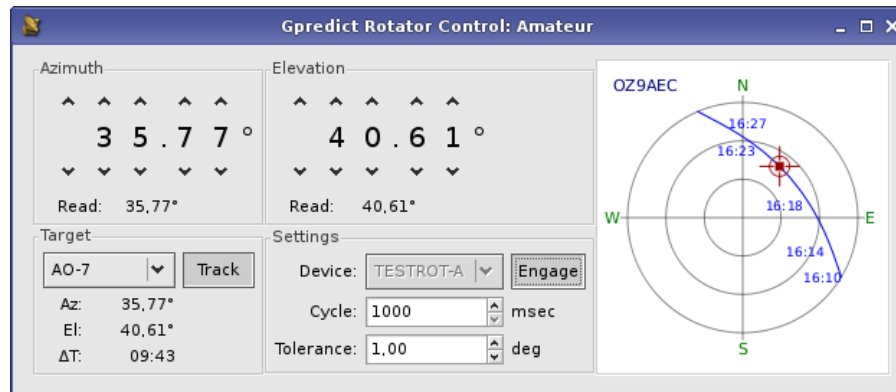
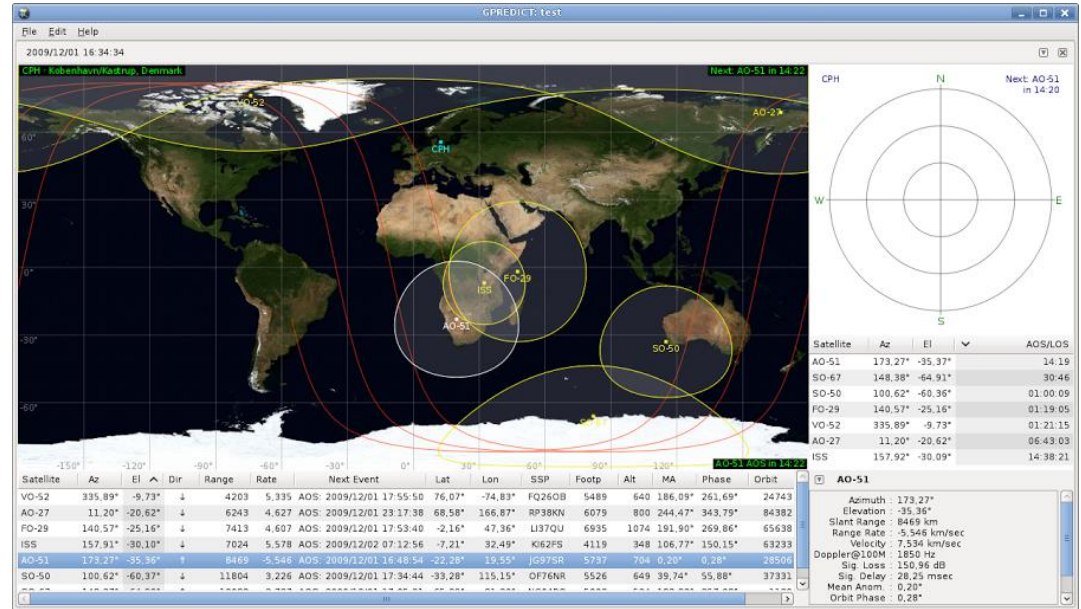


Satellite Tracking and Antenna Rotator Control

(a work in progress)

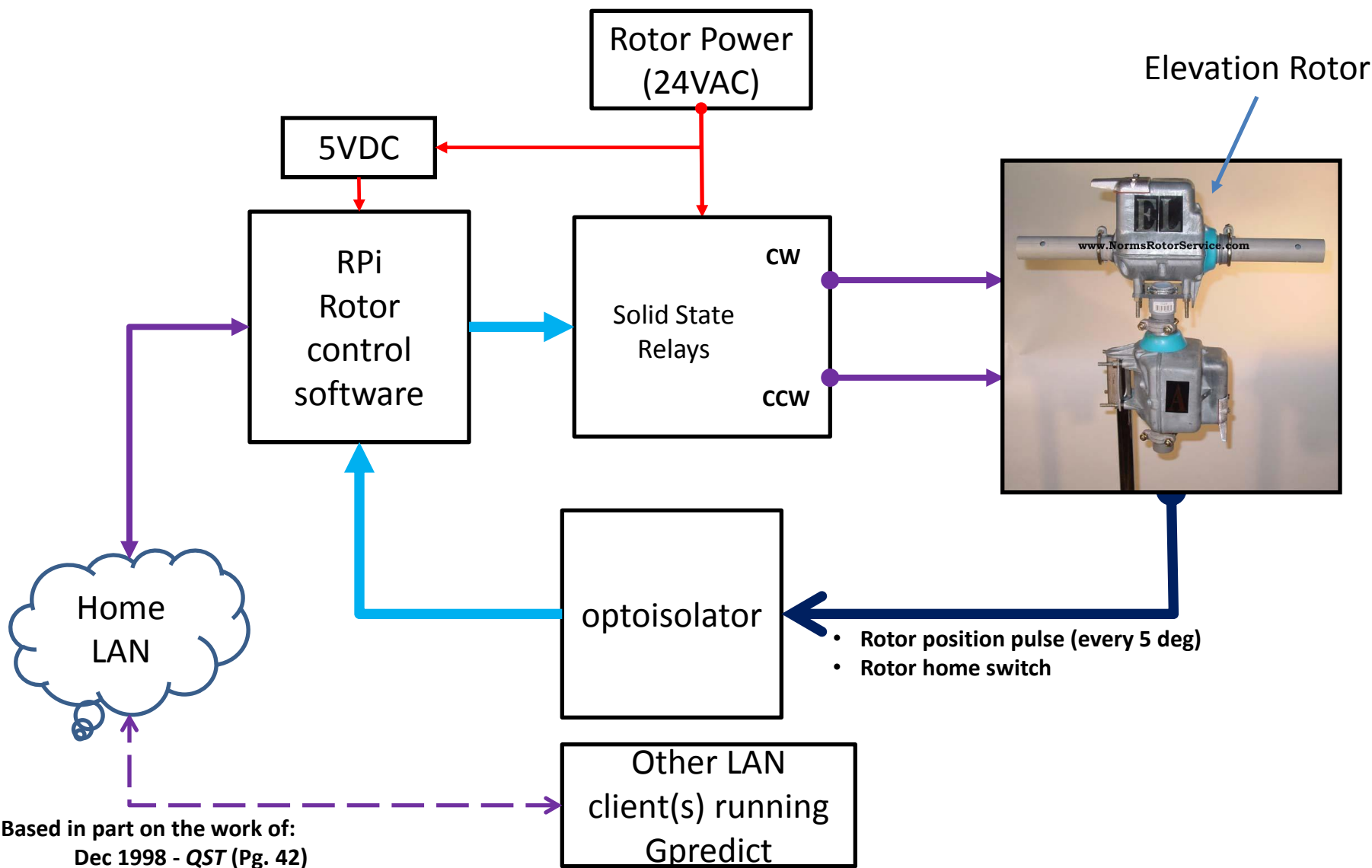


- [Gpredict](#) is free software that runs under Windows, Linux and Mac OS.
- Gpredict has the hooks in it for interfacing to antenna rotators
- Gpredict runs on the Raspberry Pi!



Satellite Tracking and Antenna Rotator Control (cont.)

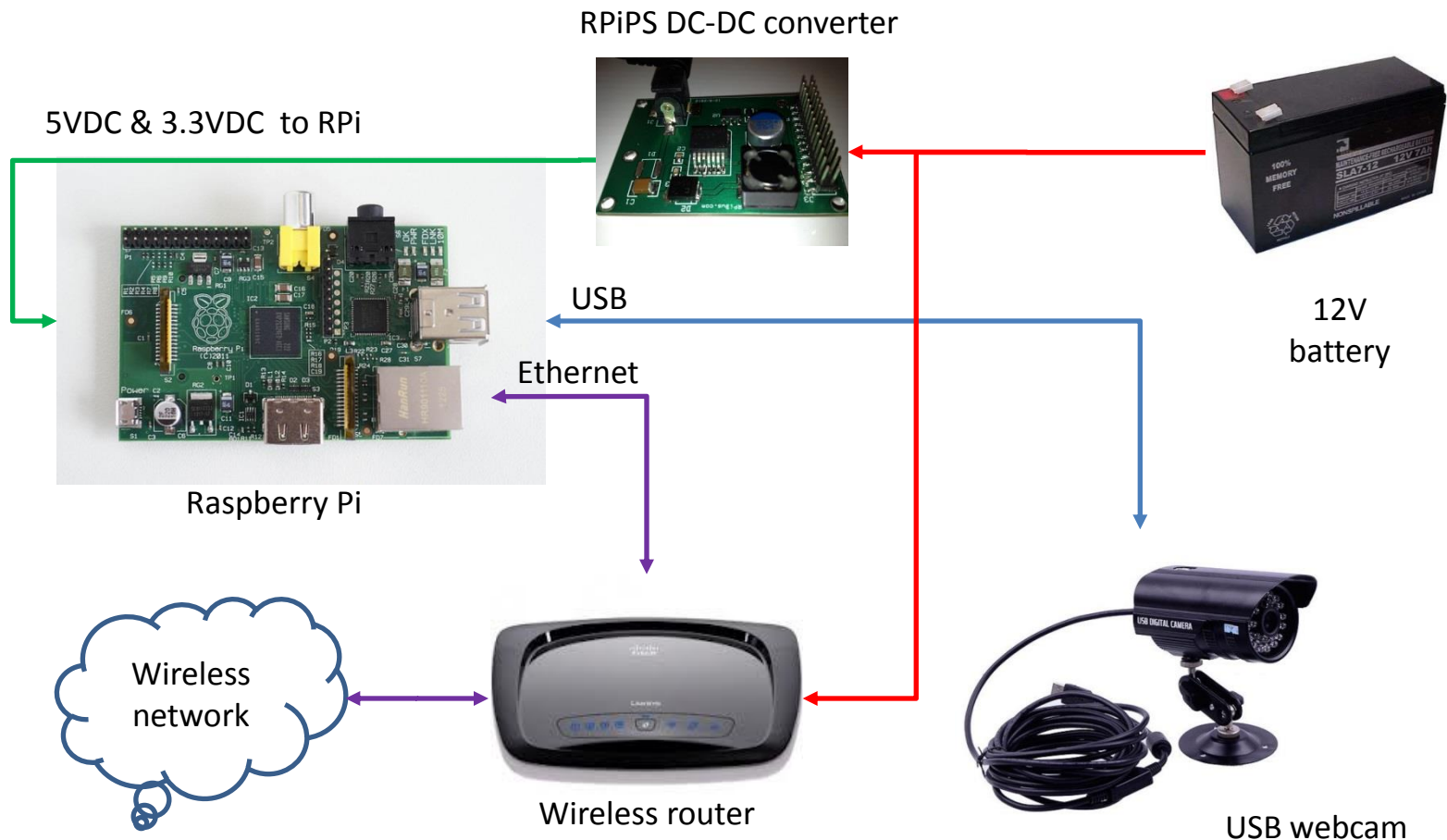
(a work in progress)



Based in part on the work of:
Dec 1998 - QST (Pg. 42)
'An Inexpensive Az-El Rotator System'
Koehler, Jim, VE5FP

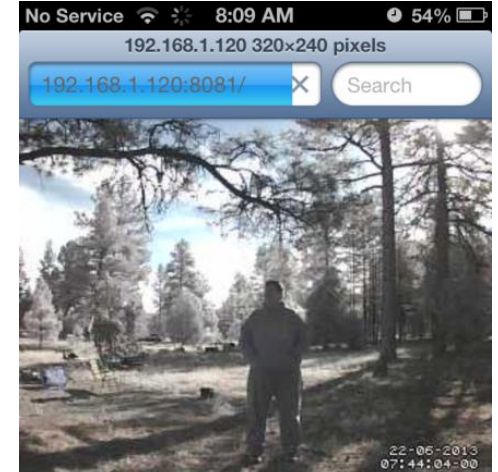
Portable Webcam

- RPi running Motion software
- Software captures video whenever motion has been detected
- Captures a still frame every minute
- Streaming video available via Wifi



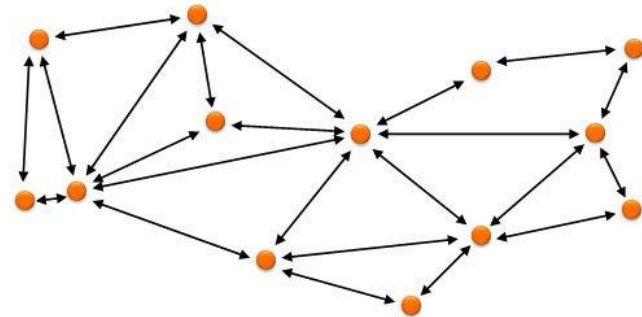
Mount on a tripod for your next Hamfest, tailgate, Field day or club activity

Portable Webcam W5MPZ



MESH Networking & RPi

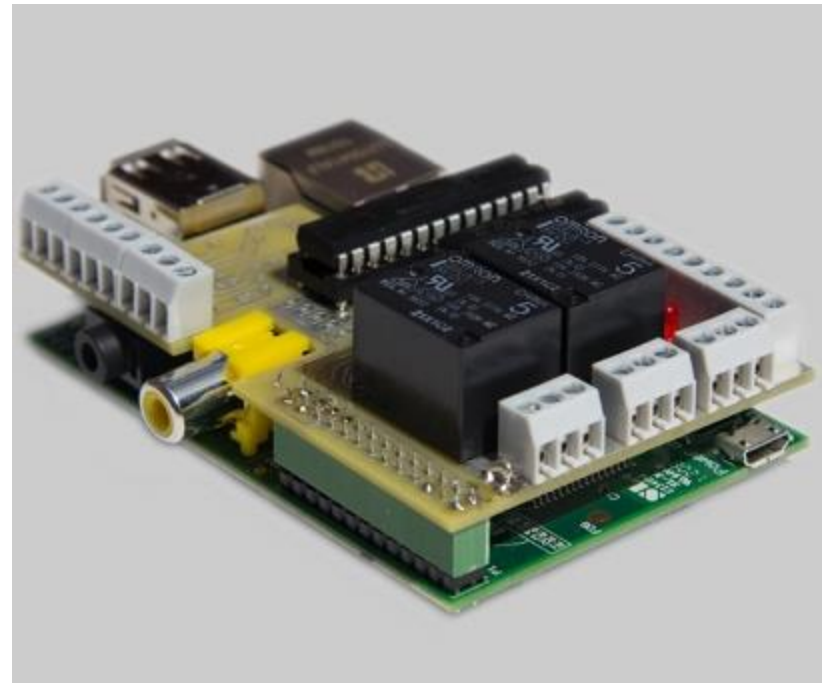
- Use you RPi to create a MESH network node
- OLSR software runinng on the RPi
 - Configured as a MESH node
 - Able to perform other simultaneous tasks
 - Webcam server
 - Wireless sensor network node
 - Internet gateway
 - File server
 - D-RATS server/bridge
 - ...
- With the RPi, MESH networking is no longer tied to out of production hardware or the 2.4GHz band (3.3, 5GHz)
- Limited only by your imagination and FCC part 97 regulations



Third Party Prototype & I/O Boards for the RPi

[Pi Face](#): Allows the RPi to control and sense physical devices such as lights, motors and sensors.

- Four momentary contact push switches
- Four LEDs.
- Two 10-A relays
- 8 general purpose open-collector outputs



'Pi Face' Digital I/O board atop a RPi



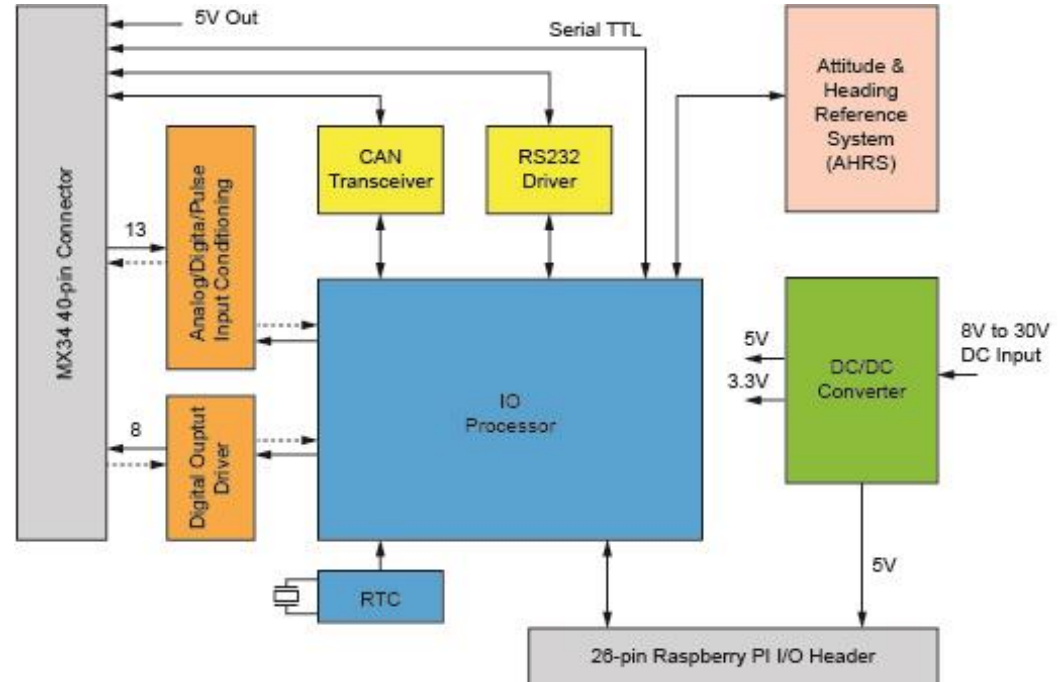
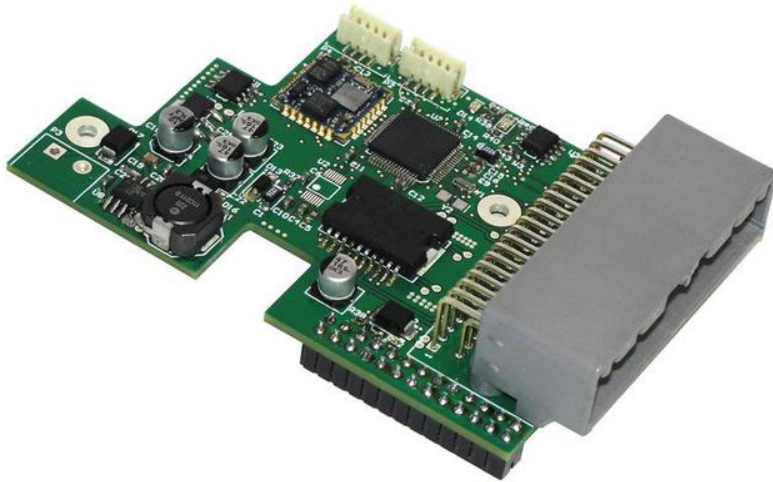
'Com Pi' board atop a RPi

[Com Pi](#) :

- RS232 Serial port
- I²C serial bus

RIO (Raspberry IO)

- I/O and power supply card for Raspberry PI.
- 13 Ana/Digital/Pulse Inputs
- 2 Ana Outs
- 8 Digital 1A Outs
- RS232
- RS485
- CAN
- Optional 3 AXIS AHRS
- Connects via the SPI buss



Powering your RPi



Raspberry Pi Power Supply (RPiPS)

- 8-30VDC input
- 5V at 3A
- 3.3V at 800mA
- \$35
- <http://rpips.com/>

Echidna 6.5V – 24V

- Power switch.
- Reset button
- \$18
- <https://geekroo.com/products/352>

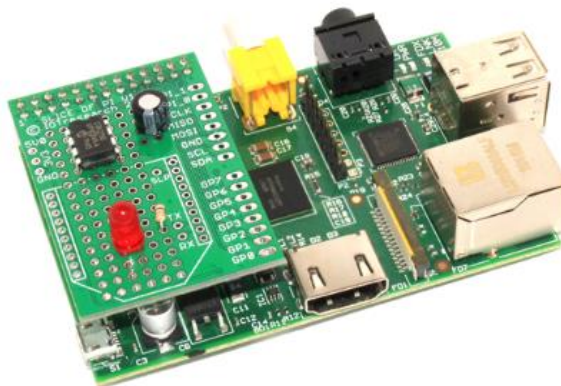
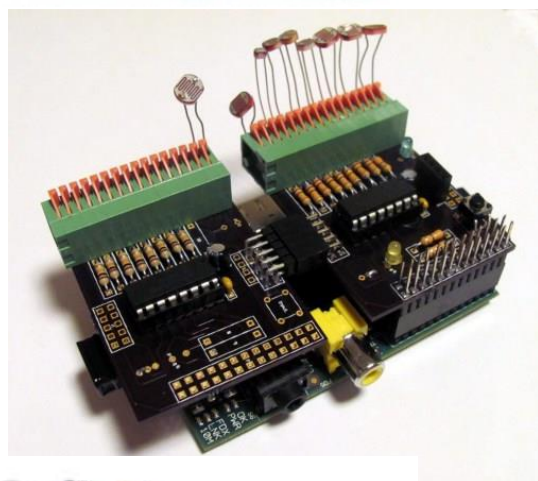
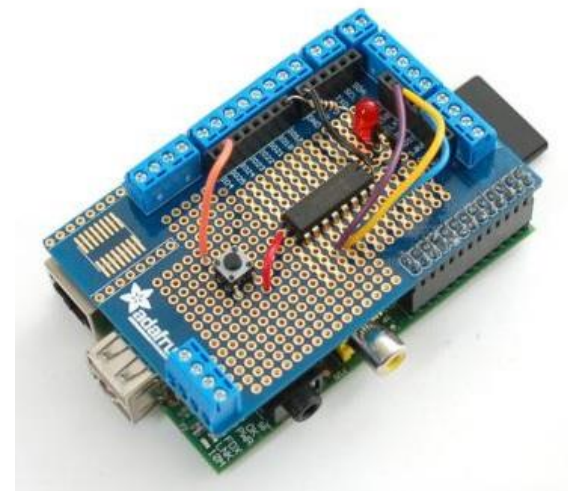
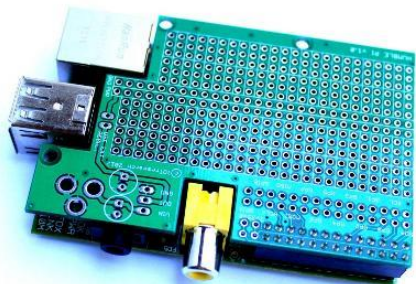


Echidna (Premium)

- 6.5V – 24V
- Power switch.
- Reset button
- Serial port
- Two voltage or current digital meters
- \$35
- <https://geekroo.com/products/526>



And Many More...



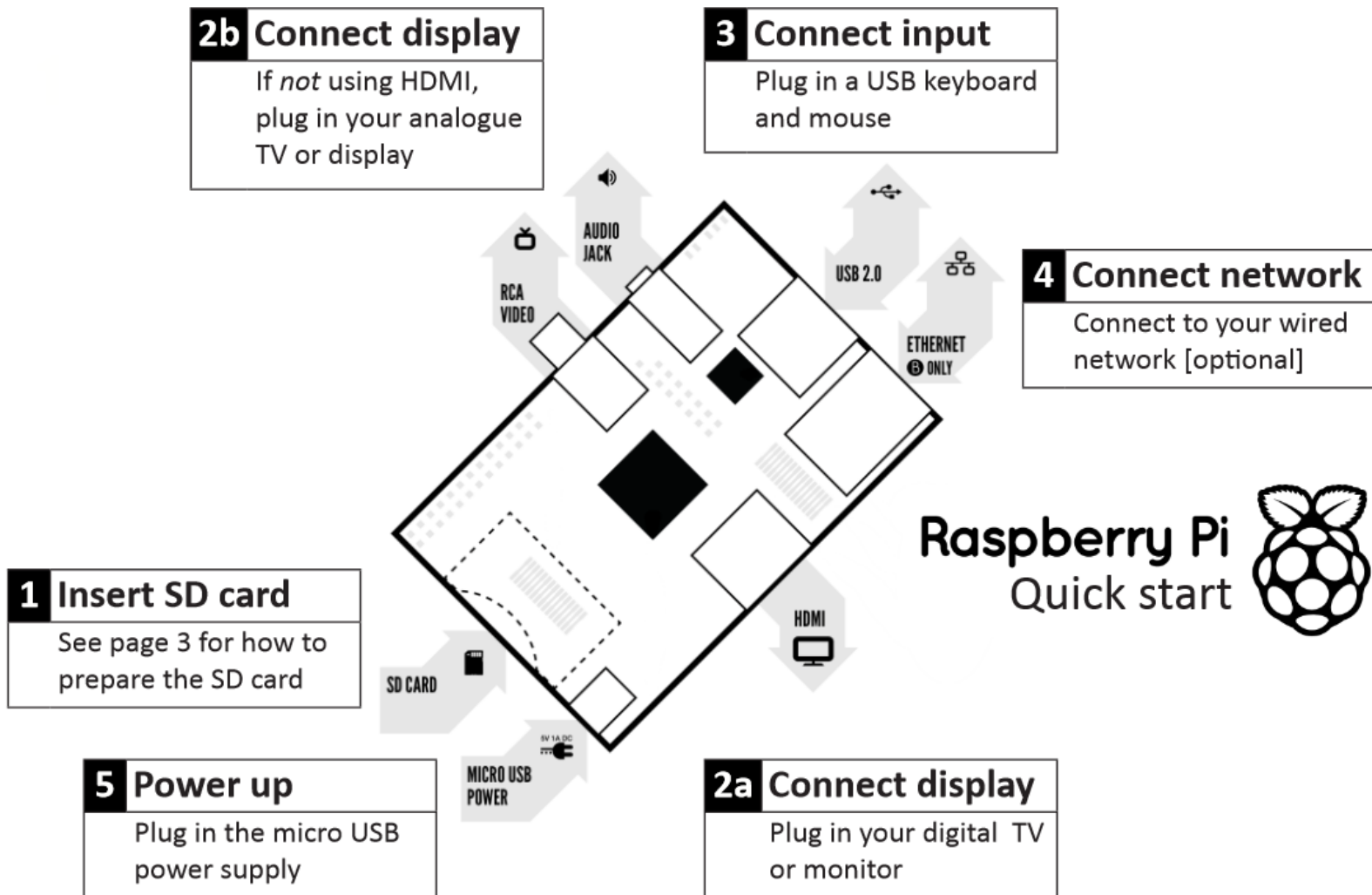
Over 140 different boards and counting!
http://elinux.org/RPi_Expansion_Boards

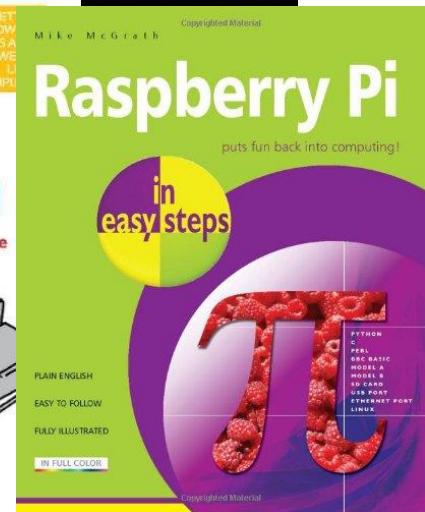
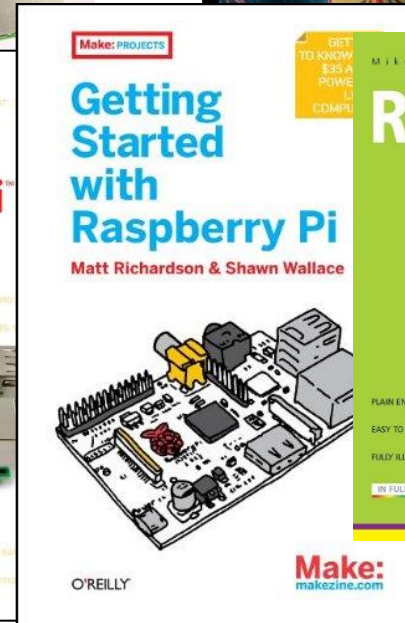
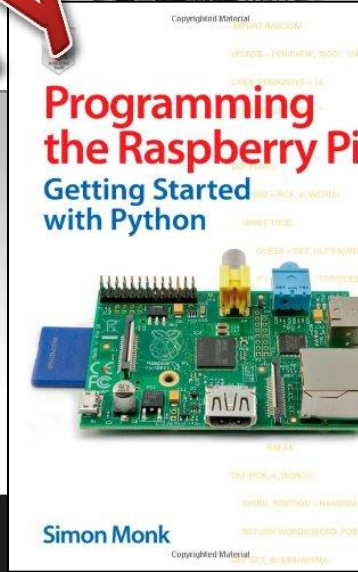
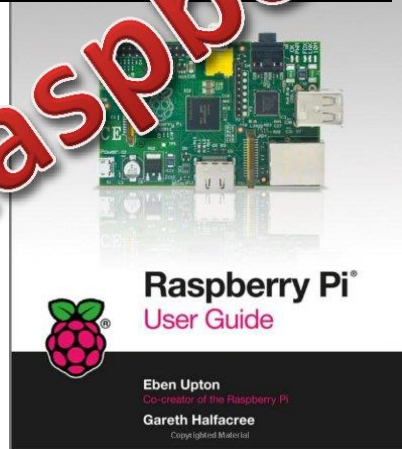
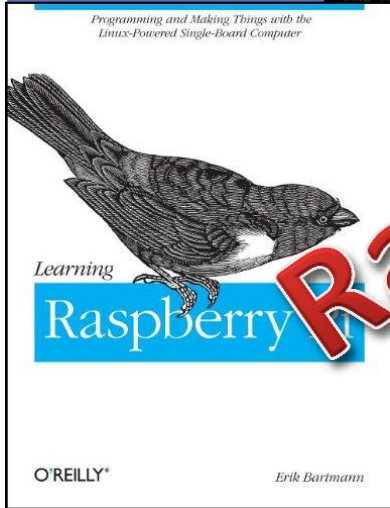
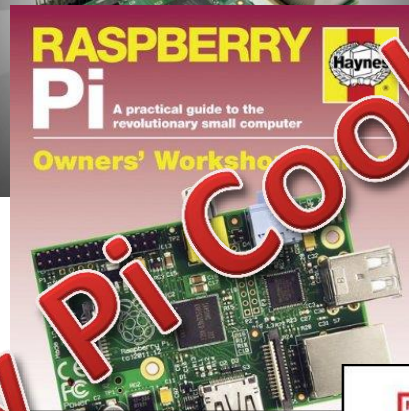
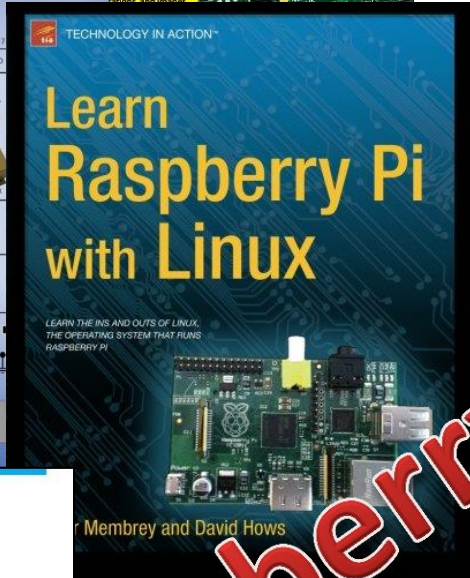
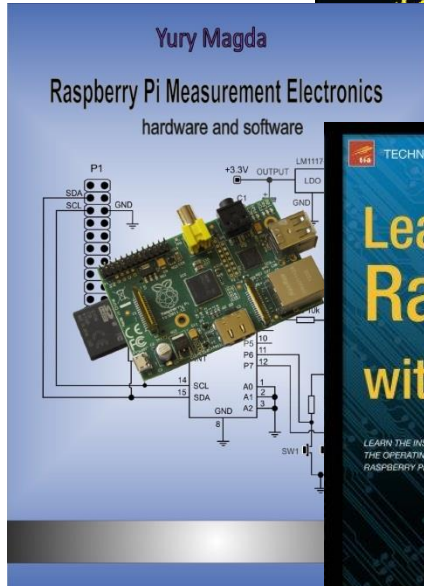
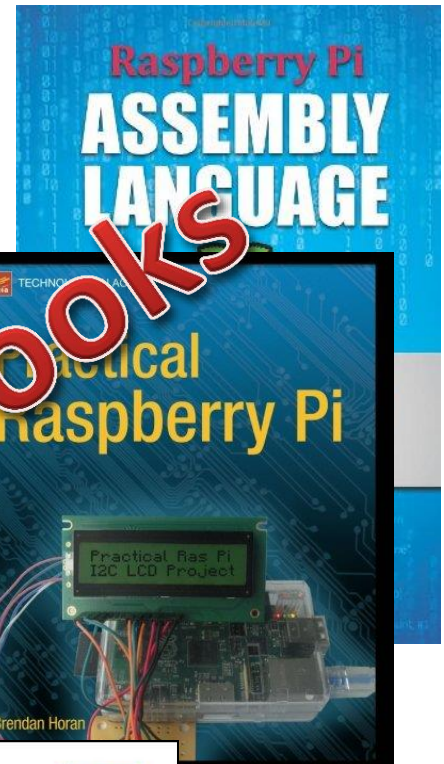
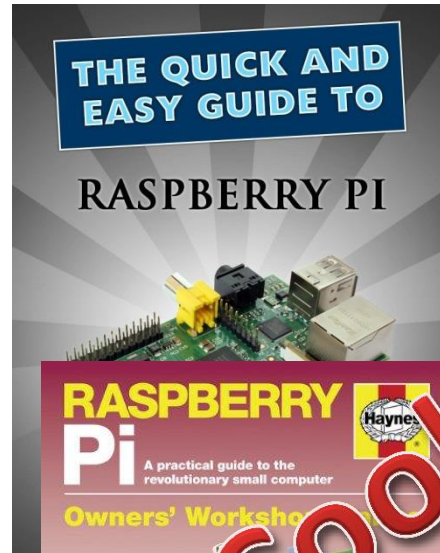
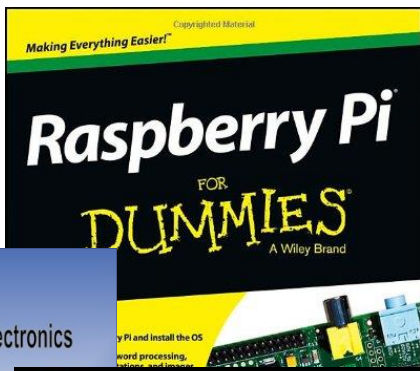
Setting up your RPI



It's almost this easy

Rpi Setup Quick Start





Raspberry Pi Cookbooks

Additional Resources



<http://www.raspberrypi.org>

Raspberry Pi Amateur Radio Yahoo Group

http://groups.yahoo.com/group/Raspberry_Pi_4-Ham_RADIO/

Raspberry Connect

<http://www.raspberryconnect.com/raspbian-packages-list/item/71-raspbian-hamradio>



Discussion/Questions?

Speaker Bio



Ed James, KA8JMW of Albuquerque, NM is originally from Canton, OH where he was licensed over thirty five years ago. Since then, Ed has savored from the broad palette that amateur radio offers. Activities have included the design and fabrication of various projects from DC to daylight, QRP, net operations, traffic handling, rag chewing, contesting, DX, transmitter hunting, Search and Rescue, public service, satellites, EME and as an elmer to many a new ham. The thrill of that first QSO hasn't diminished. He has over 29 years of service as an electrical engineer leading space based and defense projects at Sandia National Laboratories. Ed, his wife Carol and their five daughters are all active amateur radio operators. Ed is an Assistant Section Manager for the ARRL New Mexico Section and can be reached via email at ka8jmw@arrrl.net



Speaker Bio



Brian Mileschosky N5ZGT was first licensed at the age of 12 in 1992. Twenty one years later, ham radio is just as exciting now as it was when that highly anticipated envelope from the FCC with his ticket arrived in the mail. Brian is active on the air between 80 meters and 10 GHz, chasing DX, contesting, experimenting with novel technologies, assisting with public service communications, and mentoring new hams who seek the thrill of ham radio. Brian has served in numerous club and ham convention leadership positions and has sat on ARRL's Board since 2005, currently serving League members as Director of the Rocky Mountain Division (composed of the Colorado, New Mexico, Utah and Wyoming sections). Professionally, Brian is an RF/microwave engineer engaged in research and development of RF systems and applications from UHF through 30 GHz. Brian can be reached via email n5zgt@arrl.net

